



OKLAHOMA HORSE RACING COMMISSION  
AUDIT REPORT OF OPERATIONS  
ALL TRACKS – RACE DAYS AND  
SIMULCAST DAYS 2018

## Contract Audit

January 1, 2018 through December 31, 2018

**Cindy Byrd, CPA**  
State Auditor & Inspector

**OKLAHOMA HORSE RACING COMMISSION  
STATISTICAL REPORT OF OPERATIONS  
ALL TRACKS – LIVE RACE DAYS  
AND SIMULCAST DAYS  
FOR THE CALENDAR YEAR 2018**

---

*This publication, issued by the Oklahoma State Auditor and Inspector's Office as authorized by 74 O.S. § 212, has not been printed, but is available on the agency's website ([www.sai.ok.gov](http://www.sai.ok.gov)) and in the Oklahoma Department of Libraries Publications Clearinghouse Digital Collection (<http://digitalprairie.ok.gov/cdm/search/collection/audits/>) pursuant to 65 O.S. § 3-114.*



Cindy Byrd, CPA | State Auditor & Inspector

2300 N. Lincoln Blvd., Room 123, Oklahoma City, OK 73105 | 405.521.3495 | [www.sai.ok.gov](http://www.sai.ok.gov)

March 11, 2019

**TO THE MEMBERS OF THE OKLAHOMA  
HORSE RACING COMMISSION**

Transmitted herewith is the Statistical Report of Operations for all Live Race Days and Simulcast Days held at Fair Meadows, Remington Park, and Will Rogers Downs during the calendar year 2018. The report is a result of our monitoring and data accumulation in accordance with the State Auditor and Inspector's Contract with the Oklahoma Horse Racing Commission (OHRC) and Title 3A of the Oklahoma Statutes for pari-mutuel racing.

The goal of the State Auditor and Inspector is to promote accountability and fiscal integrity in state and local government. Maintaining our independence as we provide this service to the taxpayers of Oklahoma is of the utmost importance.

We wish to take this opportunity to express our appreciation for the assistance and cooperation extended to our Office during our engagement.

Sincerely,

A handwritten signature in blue ink that reads "Cindy Byrd". The signature is fluid and cursive, with the first letters of the first and last names being capitalized.

CINDY BYRD, CPA  
OKLAHOMA STATE AUDITOR & INSPECTOR



**OKLAHOMA HORSE RACING COMMISSION  
STATISTICAL REPORT OF OPERATIONS  
ALL TRACKS– LIVE RACE DAYS AND SIMULCAST DAYS  
FOR THE CALENDAR YEAR 2018**

**TABLE OF CONTENTS**

	<b><u>PAGE</u></b>
<b>INTRODUCTORY COMMENTS .....</b>	<b>iii</b>
<b>STATE AUDITOR AND INSPECTOR LETTER.....</b>	<b>1</b>
<b>ALL TRACKS – LIVE RACE DAYS AND SIMULCAST DAYS</b>	
<b>DISTRIBUTION SUMMARY OF NET WAGERED .....</b>	<b>2</b>
<b>DISTRIBUTION SUMMARY OF NET WAGERED – LIVE RACE DAYS .....</b>	<b>3</b>
<b>DISTRIBUTION SUMMARY OF NET WAGERED - SIMULCAST DAYS .....</b>	<b>4</b>
<b>NET WAGERED BY POOL .....</b>	<b>5</b>
<b>NET WAGERED BY BREED .....</b>	<b>6</b>
<b>PRIOR YEAR COMPARISON OF DISTRIBUTION SUMMARY OF NET WAGERED .....</b>	<b>7</b>
<b>PRIOR YEAR COMPARISON OF OTHER STATISTICAL INFORMATION .....</b>	<b>8</b>
<b>FAIR MEADOWS – LIVE RACE DAYS AND SIMULCAST DAYS</b>	
<b>DISTRIBUTION SUMMARY OF NET WAGERED .....</b>	<b>9</b>
<b>DISTRIBUTION SUMMARY OF NET WAGERED – LIVE RACE DAYS .....</b>	<b>10</b>
<b>DISTRIBUTION SUMMARY OF NET WAGERED - SIMULCAST DAYS .....</b>	<b>11</b>
<b>NET WAGERED BY POOL .....</b>	<b>12</b>
<b>NET WAGERED BY BREED .....</b>	<b>13</b>
<b>PRIOR YEAR COMPARISON OF DISTRIBUTION SUMMARY OF NET WAGERED .....</b>	<b>14</b>
<b>PRIOR YEAR COMPARISON OF OTHER STATISTICAL INFORMATION .....</b>	<b>15</b>
<b>REMINGTON PARK – LIVE RACE DAYS AND SIMULCAST DAYS</b>	
<b>DISTRIBUTION SUMMARY OF NET WAGERED .....</b>	<b>16</b>
<b>DISTRIBUTION SUMMARY OF NET WAGERED – LIVE RACE DAYS .....</b>	<b>17</b>
<b>DISTRIBUTION SUMMARY OF NET WAGERED - SIMULCAST DAYS .....</b>	<b>18</b>
<b>NET WAGERED BY POOL .....</b>	<b>19</b>
<b>NET WAGERED BY BREED .....</b>	<b>20</b>
<b>PRIOR YEAR COMPARISON OF DISTRIBUTION SUMMARY OF NET WAGERED .....</b>	<b>21</b>
<b>PRIOR YEAR COMPARISON OF OTHER STATISTICAL INFORMATION .....</b>	<b>22</b>

**OKLAHOMA HORSE RACING COMMISSION  
STATISTICAL REPORT OF OPERATIONS  
ALL TRACKS— LIVE RACE DAYS AND SIMULCAST DAYS  
FOR THE CALENDAR YEAR 2018**

**TABLE OF CONTENTS**  
*(continued)*

	<b><u>PAGE</u></b>
<b>WILL ROGERS DOWNS – LIVE RACE DAYS AND SIMULCAST DAYS</b>	
<b>DISTRIBUTION SUMMARY OF NET WAGERED .....</b>	<b>23</b>
<b>DISTRIBUTION SUMMARY OF NET WAGERED – LIVE RACE DAYS .....</b>	<b>24</b>
<b>DISTRIBUTION SUMMARY OF NET WAGERED - SIMULCAST DAYS .....</b>	<b>25</b>
<b>NET WAGERED BY POOL .....</b>	<b>26</b>
<b>NET WAGERED BY BREED .....</b>	<b>27</b>
<b>PRIOR YEAR COMPARISON OF DISTRIBUTION SUMMARY OF NET WAGERED .....</b>	<b>28</b>
<b>PRIOR YEAR COMPARISON OF OTHER STATISTICAL INFORMATION .....</b>	<b>29</b>
 <b>ENDNOTES .....</b>	 <b>30</b>
 <b>APPENDIX .....</b>	 <b>31</b>

# INTRODUCTORY COMMENTS

---

Statistical data and information contained herein are for presentation purposes. For substantiation of financial information, refer to end-of-meet financial data by individual racing associations or fairs. Summations may differ due to rounding.

Statistical data for this report is presented as a summary of wagers (handle), distribution of fees, commissions, and purses for each race meeting by association or fair. This data does not purport to replace any association or independent auditor's end-of-meet conclusions.

Some pool types have been combined in the all-tracks portion of this report, as not all pool types were wagered on, at each track. Please refer to the individual race meeting reports for actual pool totals. Data contained herein is a summation of the following individual reports:

- Fair Meadows – State Fair Race Meeting – 2018
- Fair Meadows – Simulcast Race Days – 2018
- Remington Park – Fall Thoroughbred Race Meeting – 2018
- Remington Park – Mixed Breed Race Meeting – 2018
- Remington Park – Simulcast Race Days – 2018
- Will Rogers Downs – Thoroughbred Race Meeting – 2018
- Will Rogers Downs – Mixed Breed Race Meeting – 2018
- Will Rogers Downs – Simulcast Race Days – 2018

Reference notes behind titles (See Note) indicate clarifying data in the Endnotes of this report. A glossary of report terms, titles, and headings can be found in the Appendix.



**Cindy Byrd, CPA | State Auditor & Inspector**

2300 N. Lincoln Blvd., Room 123, Oklahoma City, OK 73105 | 405.521.3495 | [www.sai.ok.gov](http://www.sai.ok.gov)

**TO THE MEMBERS OF THE OKLAHOMA  
HORSE RACING COMMISSION**

We performed an audit in accordance with the OHRC Horse Racing Contract and Title 3A of the Oklahoma Statutes. The information presented in this report is derived from the horse racing data obtained from the American Tote Company, Sportech, and the United Tote Company for the period January 1, 2018 through December 31, 2018.

Because our procedures do not constitute an audit conducted in accordance with generally accepted auditing standards, we do not express such an opinion on the information. This report relates only to this information and does not extend to any financial statements of the racetrack or racino.

In planning and performing these procedures, we considered the internal control structure of the pari-mutuel departments; however, our procedures were substantially less in scope than the procedures we would have applied if we had been engaged to express an opinion on the internal controls. Accordingly, we do not express an opinion on their internal control structure.

Sincerely,

A handwritten signature in blue ink that reads "Cindy Byrd". The signature is fluid and cursive, with the first name "Cindy" and last name "Byrd" clearly distinguishable.

CINDY BYRD, CPA  
OKLAHOMA STATE AUDITOR & INSPECTOR

March 11, 2019



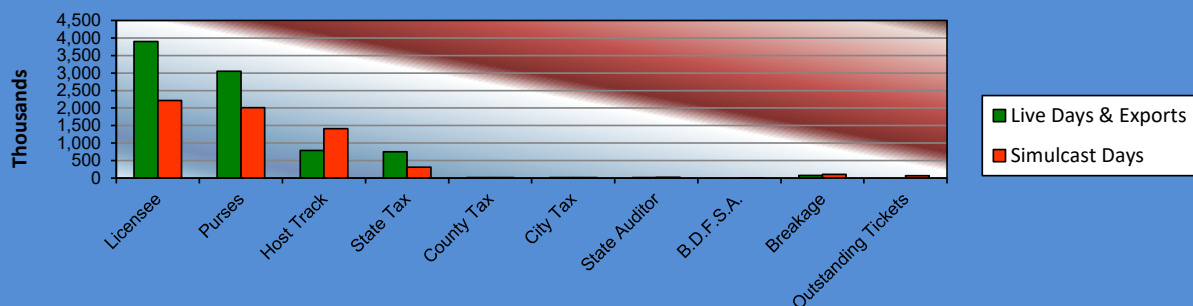
**OKLAHOMA HORSE RACING COMMISSION  
STATISTICAL REPORT OF OPERATIONS  
ALL TRACKS - LIVE DAYS AND SIMULCAST DAYS  
DISTRIBUTION SUMMARY OF NET WAGERED  
JANUARY 1, 2018 THROUGH DECEMBER 31, 2018**

	Live Days	Exports (see Note 1)	Total	Simulcast Days	Grand Total
<b>NET WAGERED</b>	\$23,669,838.70	\$109,908,230.84	\$133,578,069.54	\$28,830,618.00	\$162,408,687.54
<b>COMMISSIONS:</b>					
Licensee	1,972,319.03	1,930,636.13	3,902,955.16	2,218,022.89	\$6,120,978.05
Purses	1,675,271.89	1,374,980.03	3,050,251.92	2,009,742.23	\$5,059,994.15
Host Track	788,932.04	0.00	788,932.04	1,409,209.04	\$2,198,141.08
State Tax	409,845.68	339,560.08	749,405.76	315,896.90	\$1,065,302.66
County Tax (See Note 4)	14,974.64	0.00	14,974.64	20,113.81	\$35,088.45
City Tax (See Note 4)	14,974.64	0.00	14,974.64	20,113.81	\$35,088.45
State Auditor	14,991.31	0.00	14,991.31	28,027.64	\$43,018.95
Breeding Development Fund Special Account (B.D.F.S.A.)	24,733.24	54,033.33	78,766.57	573.39	\$79,339.96
<b>OTHERS:</b>					
Breakage	60,163.23	0.00	60,163.23	110,250.79	\$170,414.02
Outstanding Tickets (See Note 3)	0.00	0.00	0.00	72,727.81	\$72,727.81
<b>TOTAL COMMISSIONS AND OTHERS:</b>	\$4,976,205.70	\$3,699,209.57	\$8,675,415.27	\$6,204,678.31	\$14,880,093.58
<b>NET PAID TO THE PUBLIC</b>	\$18,693,633.00	\$106,209,021.27	\$124,902,654.27	\$22,625,939.69	\$147,528,593.96

**NET WAGERED \$162,408,687.54**



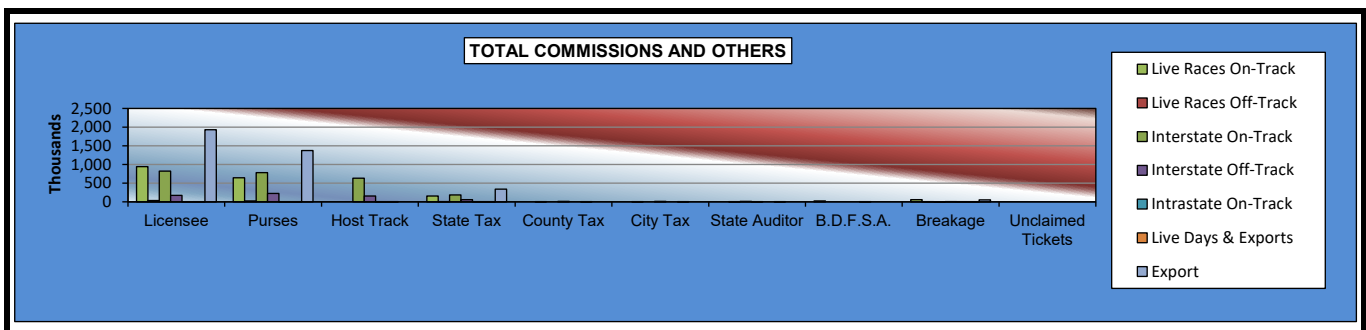
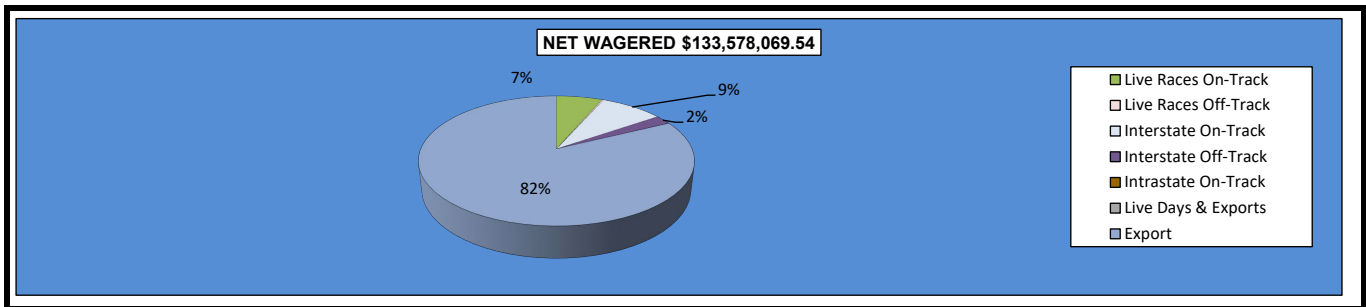
**TOTAL COMMISSIONS AND OTHERS**





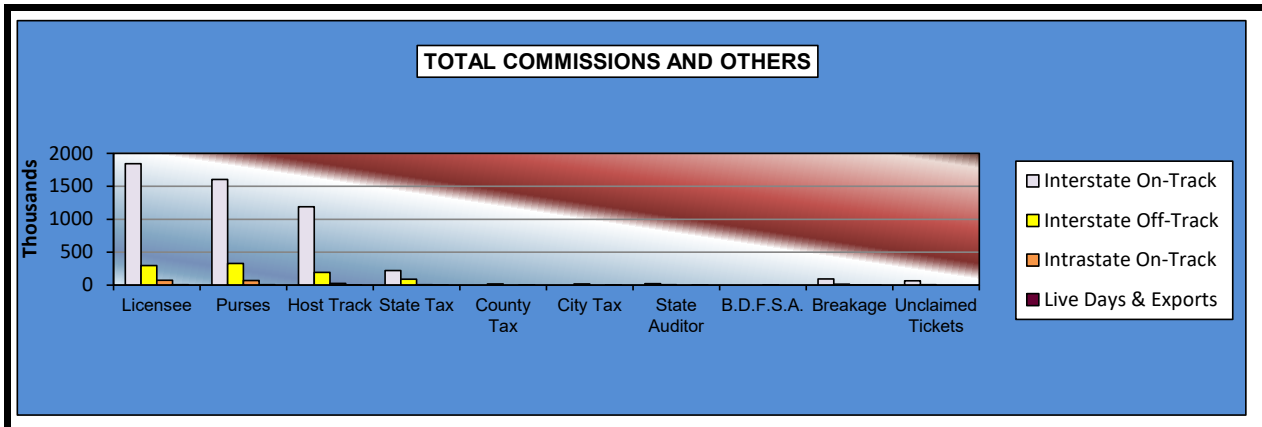
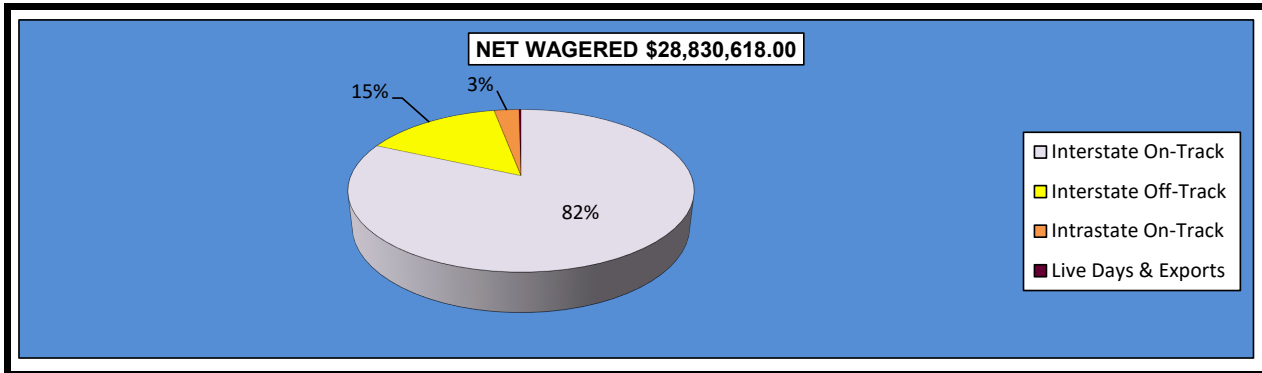
**OKLAHOMA HORSE RACING COMMISSION  
STATISTICAL REPORT OF OPERATIONS  
ALL TRACKS - LIVE DAYS AND SIMULCAST DAYS  
DISTRIBUTION SUMMARY OF NET WAGERED-LIVE DAYS  
JANUARY 1, 2018 THROUGH DECEMBER 31, 2018**

	Live Days							
	Live		Interstate Import		Intrastate Import		Export	Grand Total
	On-Track	OTW	On-Track	OTW	On-Track	OTW		
<b>NET WAGERED</b>	\$8,620,442.70	\$287,922.70	\$11,663,619.50	\$3,025,916.50	\$58,077.90	\$13,859.40	\$109,908,230.84	\$133,578,069.54
<b>COMMISSIONS:</b>								
Licensee	940,381.15	33,514.44	820,534.61	171,341.66	5,406.40	1,140.77	1,930,636.13	\$3,902,955.16
Purses	641,692.30	21,594.34	780,027.95	226,944.15	3,973.68	1,039.47	1,374,980.03	\$3,050,251.92
Host Track	0.00	0.00	631,520.42	155,253.46	1,742.37	415.79	0.00	\$788,932.04
State Tax	158,543.98	5,758.47	183,586.10	60,518.37	1,161.58	277.18	339,560.08	\$749,405.76
County Tax (See Note 4)	0.00	1,295.65	0.00	13,616.62	0.00	62.37	0.00	\$14,974.64
City Tax (See Note 4)	0.00	1,295.65	0.00	13,616.62	0.00	62.37	0.00	\$14,974.64
State Auditor	0.00	287.92	11,663.62	3,025.91	0.00	13.86	0.00	\$14,991.31
Breeding Development Fund								
Special Account (B.D.F.S.A.)	24,573.55	0.00	0.00	0.00	159.69	0.00	54,033.33	\$78,766.57
<b>OTHERS:</b>								
Breakage	56,620.62	913.41	(7,044.87)	9,399.99	234.02	40.06	0.00	\$60,163.23
Outstanding Tickets	0.00	0.00	0.00	0.00	0.00	0.00	0.00	\$0.00
<b>TOTAL COMMISSIONS AND OTHERS:</b>	\$1,821,811.60	\$64,659.88	\$2,420,287.83	\$653,716.78	\$12,677.74	\$3,051.87	\$3,699,209.57	\$8,675,415.27
<b>NET PAID TO THE PUBLIC</b>	\$6,798,631.10	\$223,262.82	\$9,243,331.67	\$2,372,199.72	\$45,400.16	\$10,807.53	\$106,209,021.27	\$124,902,654.27



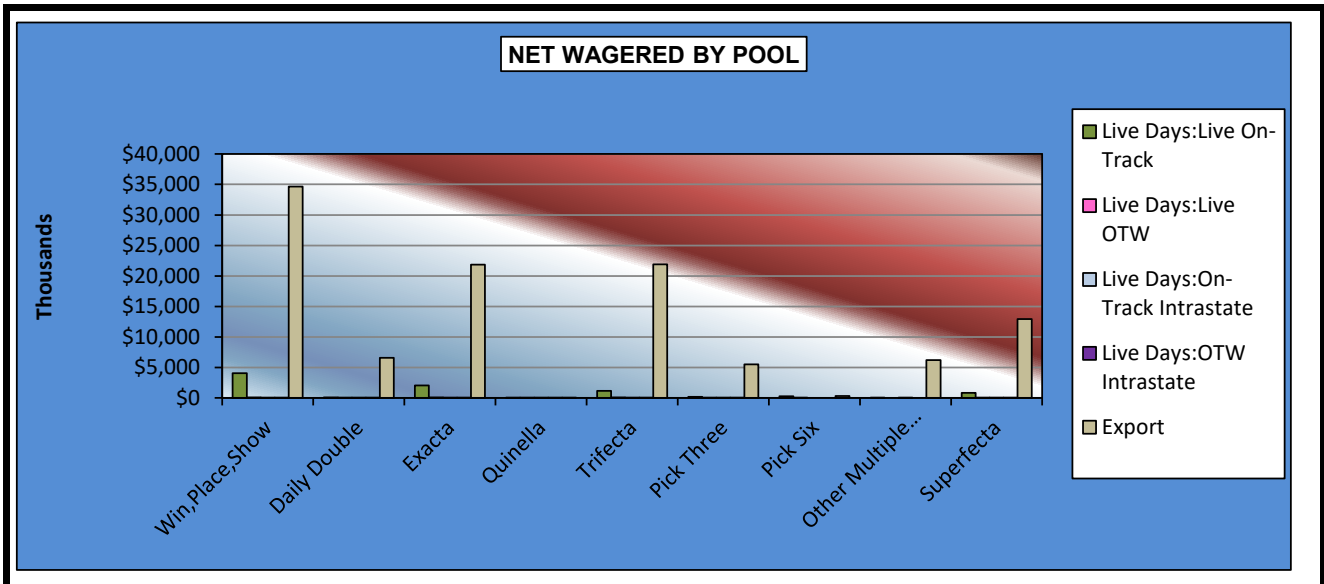
**OKLAHOMA HORSE RACING COMMISSION**  
**STATISTICAL REPORT OF OPERATIONS**  
**ALL TRACKS - LIVE DAYS AND SIMULCAST DAYS**  
**DISTRIBUTION SUMMARY OF NET WAGERED-SIMULCAST DAYS**  
**JANUARY 1, 2018 THROUGH DECEMBER 31, 2018**

	Simulcast Days				Grand Total
	Interstate Import		Intrastate Import		
	On-Track	OTW	On-Track	OTW	
NET WAGERED	\$23,557,893.90	\$4,405,633.80	\$802,990.30	\$64,100.00	\$28,830,618.00
COMMISSIONS:					
Licensee	1,843,128.94	295,221.86	74,278.66	5,393.43	\$2,218,022.89
Purses	1,605,407.00	330,423.55	69,104.17	4,807.51	\$2,009,742.23
Host Track	1,189,263.79	193,932.30	24,089.94	1,923.01	\$1,409,209.04
State Tax	222,287.92	88,112.72	4,214.25	1,282.01	\$315,896.90
County Tax (See Note 4)	0.00	19,825.36	0.00	288.45	\$20,113.81
City Tax (See Note 4)	0.00	19,825.36	0.00	288.45	\$20,113.81
State Auditor	23,557.90	4,405.64	0.00	64.10	\$28,027.64
Breeding Development Fund Special Account (B.D.F.S.A.)	0.00	0.00	573.39	0.00	\$573.39
OTHERS:					
Breakage	94,669.59	13,783.09	1,583.86	214.25	\$110,250.79
Outstanding Tickets	66,096.64	6,631.17	0.00	0.00	\$72,727.81
TOTAL COMMISSIONS AND OTHERS:	\$5,044,411.78	\$972,161.05	\$173,844.27	\$14,261.21	\$6,204,678.31
NET PAID TO THE PUBLIC	\$18,513,482.12	\$3,433,472.75	\$629,146.03	\$49,838.79	\$22,625,939.69



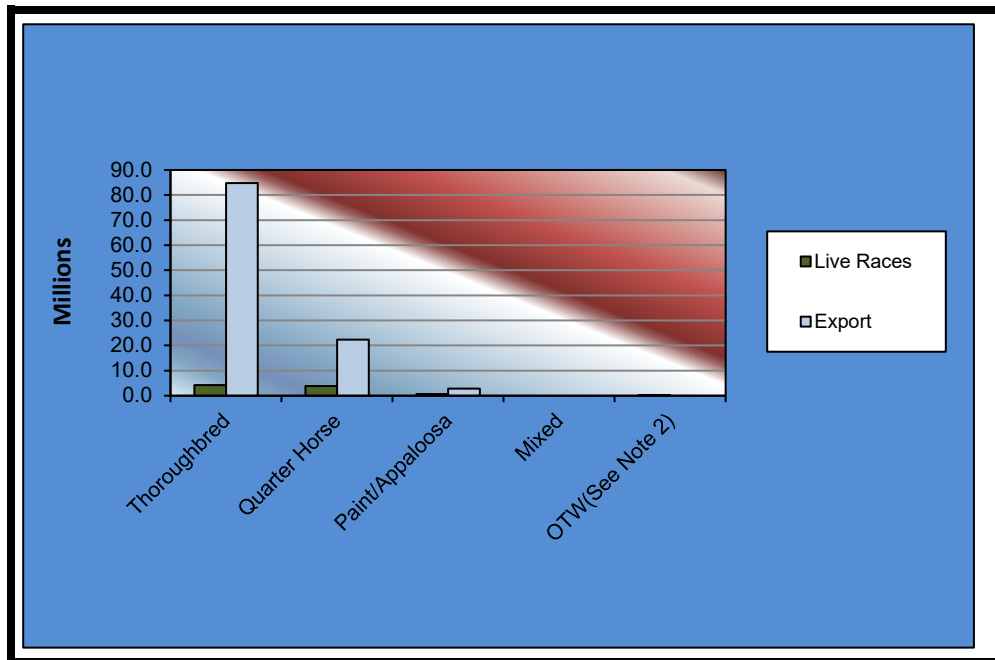
**OKLAHOMA HORSE RACING COMMISSION  
STATISTICAL REPORT OF OPERATIONS  
ALL TRACKS - LIVE DAYS AND SIMULCAST DAYS  
NET WAGERED BY POOL  
JANUARY 1, 2018 THROUGH DECEMBER 31, 2018**

	Live Days					Grand Total
	Live Races		Intrastate Import		Export	
	On-Track	OTW	On-Track	OTW		
Win,Place,Show	\$4,041,550.00	\$52,876.00	\$17,129.00	\$2,809.00	\$34,672,271.54	\$38,786,635.54
Daily Double	92,509.00	7,595.00	498.00	141.00	6,576,915.73	\$6,677,658.73
Exacta	2,045,346.00	77,387.00	14,419.00	4,539.00	21,838,909.51	\$23,980,600.51
Quinella	46,468.00	2,192.00	792.00	177.00	2,086.50	\$51,715.50
Trifecta	1,151,232.50	66,771.50	12,290.50	4,161.50	21,897,386.66	\$23,131,842.66
Pick Three	161,902.50	18,037.00	527.00	27.00	5,496,448.43	\$5,676,941.93
Pick Six	271,313.50	25,717.00	0.00	0.00	308,239.24	\$605,269.74
Other Multiple Picks	5,082.00	0.00	1,402.70	0.00	6,173,831.80	\$6,180,316.50
Superfecta	805,039.20	37,347.20	11,019.70	2,004.90	12,942,141.43	\$13,797,552.43
NET WAGERED	\$8,620,442.70	\$287,922.70	\$58,077.90	\$13,859.40	\$109,908,230.84	\$118,888,533.54



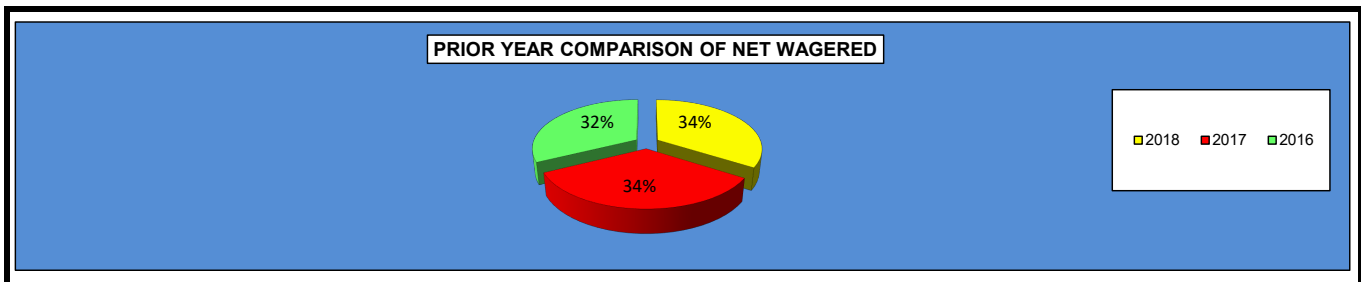
**OKLAHOMA HORSE RACING COMMISSION  
STATISTICAL REPORT OF OPERATIONS  
ALL TRACKS - LIVE DAYS AND SIMULCAST DAYS  
NET WAGERED BY BREED  
JANUARY 1, 2018 THROUGH DECEMBER 31, 2018**

	Live Days		Grand Total
	Live Races	Export	
Thoroughbred	\$4,184,187.50	\$84,716,216.73	\$88,900,404.23
Quarter Horse	3,832,330.70	22,383,205.42	\$26,215,536.12
Paint/Appaloosa	603,924.50	2,808,808.69	\$3,412,733.19
Mixed	0.00	0.00	\$0.00
OTW(See Note 2)	287,922.70	0.00	\$287,922.70
<b>Net Wagered</b>	<b>\$8,908,365.40</b>	<b>\$109,908,230.84</b>	<b>\$118,816,596.24</b>



**OKLAHOMA HORSE RACING COMMISSION  
STATISTICAL REPORT OF OPERATIONS  
ALL TRACKS - LIVE DAYS AND SIMULCAST DAYS  
PRIOR YEAR COMPARISON - DISTRIBUTION SUMMARY OF NET WAGERED  
JANUARY 1, 2018 THROUGH DECEMBER 31, 2018**

	2018 (See Note 1)	2017 (See Note 1)	2016 (See Note 1)	2017 to 2018 Increase (Decrease)	% Increase (Decrease)	2016 to 2017 Increase (Decrease)	% Increase (Decrease)
<b>NET WAGERED</b>	\$162,408,687.54	\$160,696,670.53	\$154,432,193.75	\$1,712,017.01	1.07%	\$6,264,476.78	4.06%
<b>COMMISSIONS:</b>							
Licensee	6,120,978.05	6,228,270.60	6,239,490.24	(107,292.55)	-1.72%	(11,219.64)	-0.18%
Purses	5,059,994.15	5,177,993.74	5,272,063.20	(117,999.59)	-2.28%	(94,069.46)	-1.78%
Host Track	2,198,141.08	2,424,298.46	2,570,794.82	(226,157.38)	-9.33%	(146,496.36)	-5.70%
State Tax	1,065,302.66	1,055,868.20	1,099,158.73	9,434.46	0.89%	(43,290.53)	-3.94%
County Tax (See Note 4)	35,088.45	39,294.50	48,374.52	(4,206.05)	-10.70%	(9,080.02)	-18.77%
City Tax (See Note 4)	35,088.45	39,294.50	48,374.52	(4,206.05)	-10.70%	(9,080.02)	-18.77%
State Auditor	43,018.95	47,321.94	50,705.20	(4,302.99)	-9.09%	(3,383.26)	-6.67%
Breeding Development Fund							
Special Account	79,339.96	73,686.18	68,996.19	5,653.78	7.67%	4,689.99	6.80%
<b>OTHERS:</b>							
Breakage	170,414.02	288,267.01	314,923.15	(117,852.99)	-40.88%	(26,656.14)	-8.46%
Outstanding Tickets	72,727.81	60,853.90	70,119.43	11,873.91	19.51%	(9,265.53)	-13.21%
<b>TOTAL COMMISSIONS AND OTHERS</b>	\$14,880,093.58	\$15,435,149.03	\$15,783,000.00	(\$555,055.45)	-3.60%	(\$347,850.97)	-2.20%



**OKLAHOMA HORSE RACING COMMISSION**  
**STATISTICAL REPORT OF OPERATIONS**  
**ALL TRACKS - LIVE DAYS AND SIMULCAST DAYS**  
**PRIOR YEAR COMPARISON - DISTRIBUTION SUMMARY OF NET WAGERED**  
**JANUARY 1, 2018 THROUGH DECEMBER 31, 2018**

	2018 (See Note 1)	2017 (See Note 1)	2016 (See Note 1)	2017 to 2018 Increase (Decrease)	% Increase (Decrease)	2016 to 2017 Increase (Decrease)	% Increase (Decrease)
<b>NET WAGERED</b>	\$162,408,687.54	\$160,696,670.53	\$154,432,193.75	\$1,712,017.01	1.07%	\$6,264,476.78	4.06%
Number of Race Days	1059	1059	1051	0	0.00%	8	0.76%
Number of Live Days	209	208	209	1	0.48%	(1)	-0.48%
Average Daily Handle	\$153,360.42	\$151,743.79	\$146,938.34	\$1,616.63	1.07%	\$4,805.45	3.27%
<b>LIVE RACES</b>							
Average Wagered Per Race:							
Thoroughbred	\$86,478.99	\$97,515.98	\$88,225.36	(\$11,036.99)	-11.32%	\$9,290.62	10.53%
Quarter Horse	\$27,888.87	\$25,399.90	\$24,242.52	\$2,488.97	9.80%	\$1,157.38	4.77%
Paint/Appaloosa	\$16,407.37	\$13,890.19	\$11,925.30	\$2,517.18	18.12%	\$1,964.89	16.48%
Mixed	\$0.00	\$0.00	\$0.00	\$0.00	0.00%	\$0.00	0.00%
OTW	\$244.83	\$274.07	\$352.61	(\$29.24)	-10.67%	(\$78.54)	-22.27%
Average Races Per Day:							
Thoroughbred	4.92	5.03	4.20	(0.11)	-2.19%	0.83	19.76%
Quarter Horse	4.50	4.42	4.55	0.08	1.81%	(0.13)	-2.86%
Paint/Appaloosa	1.00	0.92	0.94	0.08	8.70%	(0.02)	-2.13%
Mixed	0.00	0.00	0.00	0.00	0.00%	0.00	0.00%
OTW	10.42	7.07	8.56	3.35	47.38%	(1.49)	-17.41%

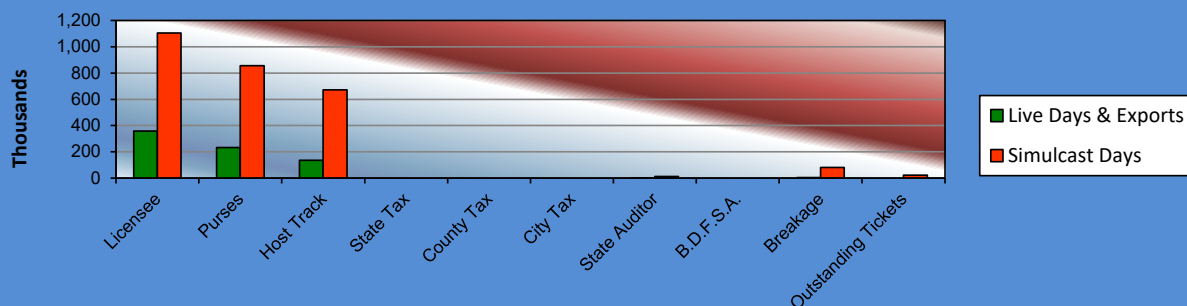
**OKLAHOMA HORSE RACING COMMISSION  
STATISTICAL REPORT OF OPERATIONS  
FAIR MEADOWS AT TULSA-LIVE RACE DAYS AND SIMULCAST DAYS  
DISTRIBUTION SUMMARY OF NET WAGERED  
JANUARY 1, 2018 THROUGH DECEMBER 31, 2018**

	Live Days	Exports (see Note 1)	Total	Simulcast Days	Grand Total
<b>NET WAGERED</b>	\$3,177,556.10	\$3,128,562.39	\$6,306,118.49	\$13,035,781.10	\$19,341,899.59
<b>COMMISSIONS:</b>					
Licensee	295,543.95	63,415.70	\$358,959.65	1,104,353.10	\$1,463,312.75
Purses	200,610.71	31,718.29	\$232,329.00	855,516.32	\$1,087,845.32
Host Track	135,272.29	0.00	\$135,272.29	672,486.88	\$807,759.17
State Tax	0.00	0.00	\$0.00	0.00	\$0.00
County Tax (See Note 4)	0.00	0.00	\$0.00	0.00	\$0.00
City Tax (See Note 4)	0.00	0.00	\$0.00	0.00	\$0.00
State Auditor	2,484.31	0.00	\$2,484.31	12,443.50	\$14,927.81
Breeding Development Fund Special Account (B.D.F.S.A.)	3,358.20	556.66	\$3,914.86	0.00	\$3,914.86
<b>OTHERS:</b>					
Breakage	18,659.81	0.00	\$18,659.81	82,274.09	\$100,933.90
Outstanding Tickets (See Note 3)	0.00	0.00	\$0.00	22,924.45	\$22,924.45
<b>TOTAL COMMISSIONS AND OTHERS:</b>	\$655,929.27	\$95,690.65	\$751,619.92	\$2,749,998.34	\$3,501,618.26
<b>NET PAID TO THE PUBLIC</b>	\$2,521,626.83	\$3,032,871.74	\$5,554,498.57	\$10,285,782.76	\$15,840,281.33

**NET WAGERED \$19,341,899.59**

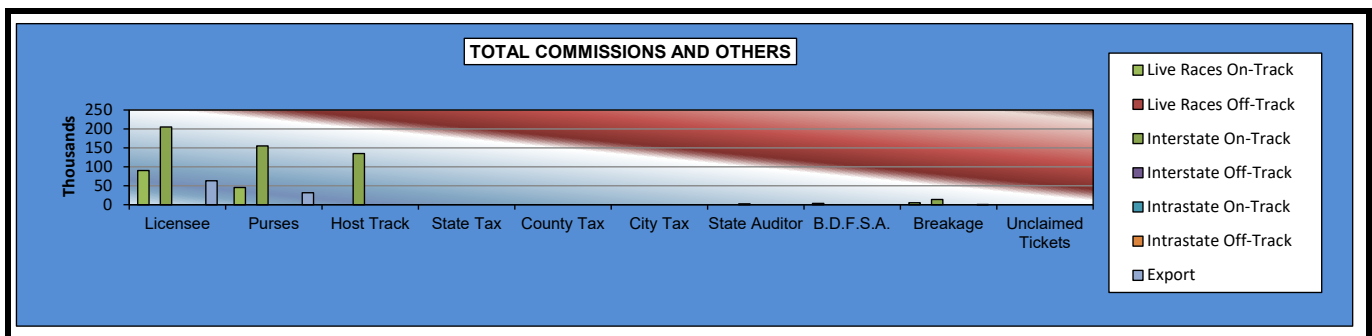
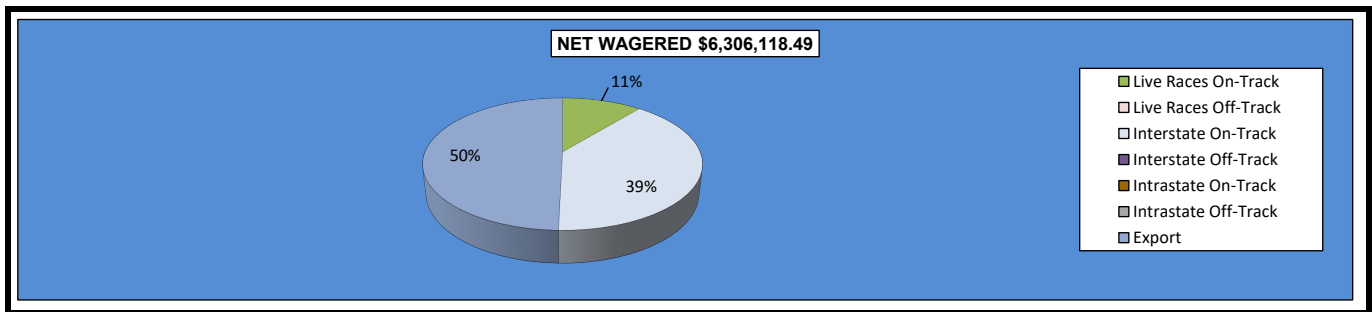


**TOTAL COMMISSIONS AND OTHERS**



**OKLAHOMA HORSE RACING COMMISSION  
STATISTICAL REPORT OF OPERATIONS  
FAIR MEADOWS AT TULSA-LIVE RACE DAYS AND SIMULCAST DAYS  
DISTRIBUTION SUMMARY OF NET WAGERED-LIVE DAYS  
JANUARY 1, 2018 THROUGH DECEMBER 31, 2018**

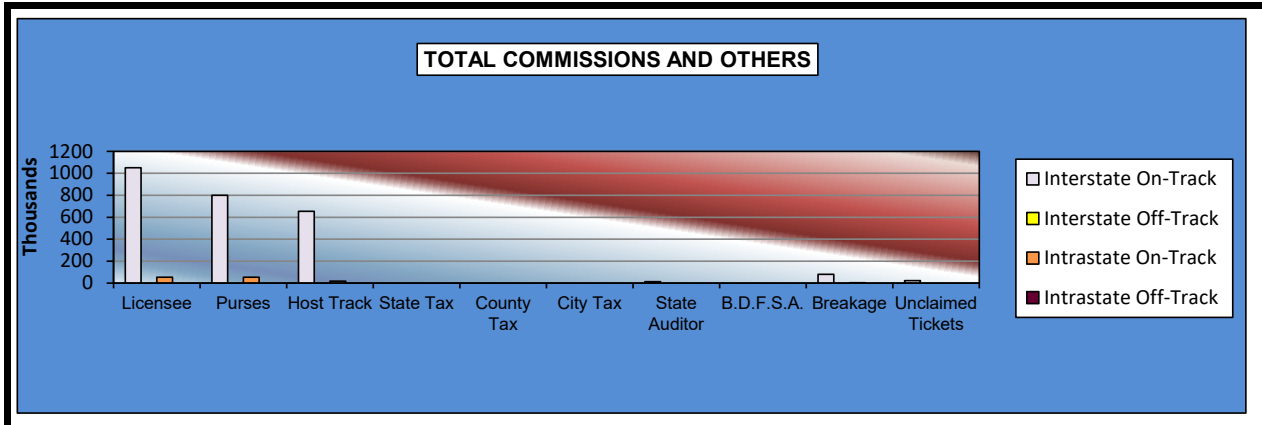
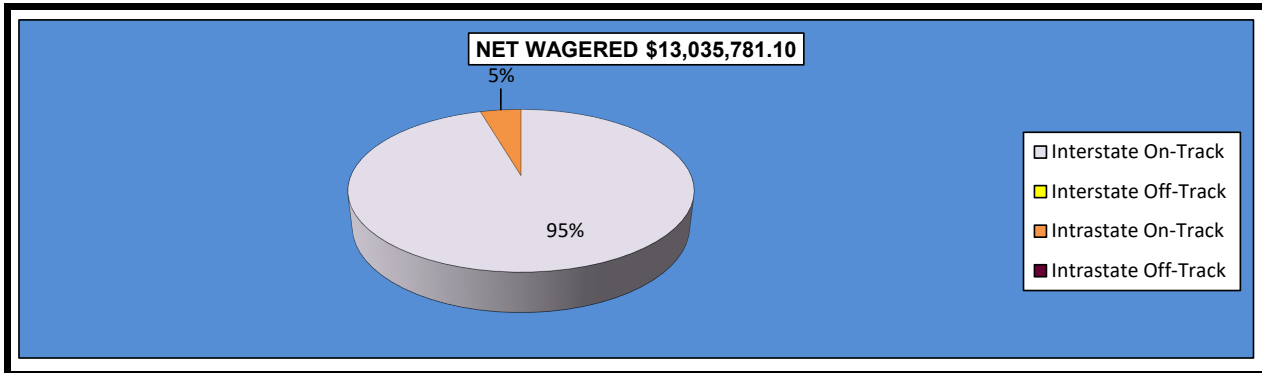
	Live Days							
	Live		Interstate Import		Intrastate Import		Export	Grand Total
	On-Track	OTW	On-Track	OTW	On-Track	OTW		
NET WAGERED	\$693,245.50	\$0.00	\$2,484,310.60	\$0.00	\$0.00	\$0.00	\$3,128,562.39	\$6,306,118.49
COMMISSIONS:								
Licensee	90,496.52	0.00	205,047.43	0.00	0.00	0.00	63,415.70	\$358,959.65
Purses	45,249.46	0.00	155,361.25	0.00	0.00	0.00	31,718.29	\$232,329.00
Host Track	0.00	0.00	135,272.29	0.00	0.00	0.00	0.00	\$135,272.29
State Tax	0.00	0.00	0.00	0.00	0.00	0.00	0.00	\$0.00
County Tax (See Note 4)	0.00	0.00	0.00	0.00	0.00	0.00	0.00	\$0.00
City Tax (See Note 4)	0.00	0.00	0.00	0.00	0.00	0.00	0.00	\$0.00
State Auditor	0.00	0.00	2,484.31	0.00	0.00	0.00	0.00	\$2,484.31
Breeding Development Fund								
Special Account (B.D.F.S.A.)	3,358.20	0.00	0.00	0.00	0.00	0.00	556.66	\$3,914.86
OTHERS:								
Breakage	5,049.62	0.00	13,610.19	0.00	0.00	0.00	0.00	\$18,659.81
Outstanding Tickets	0.00	0.00	0.00	0.00	0.00	0.00	0.00	\$0.00
TOTAL COMMISSIONS AND OTHERS:	\$144,153.80	\$0.00	\$511,775.47	\$0.00	\$0.00	\$0.00	\$95,690.65	\$751,619.92
NET PAID TO THE PUBLIC	\$549,091.70	\$0.00	\$1,972,535.13	\$0.00	\$0.00	\$0.00	\$3,032,871.74	\$5,554,498.57





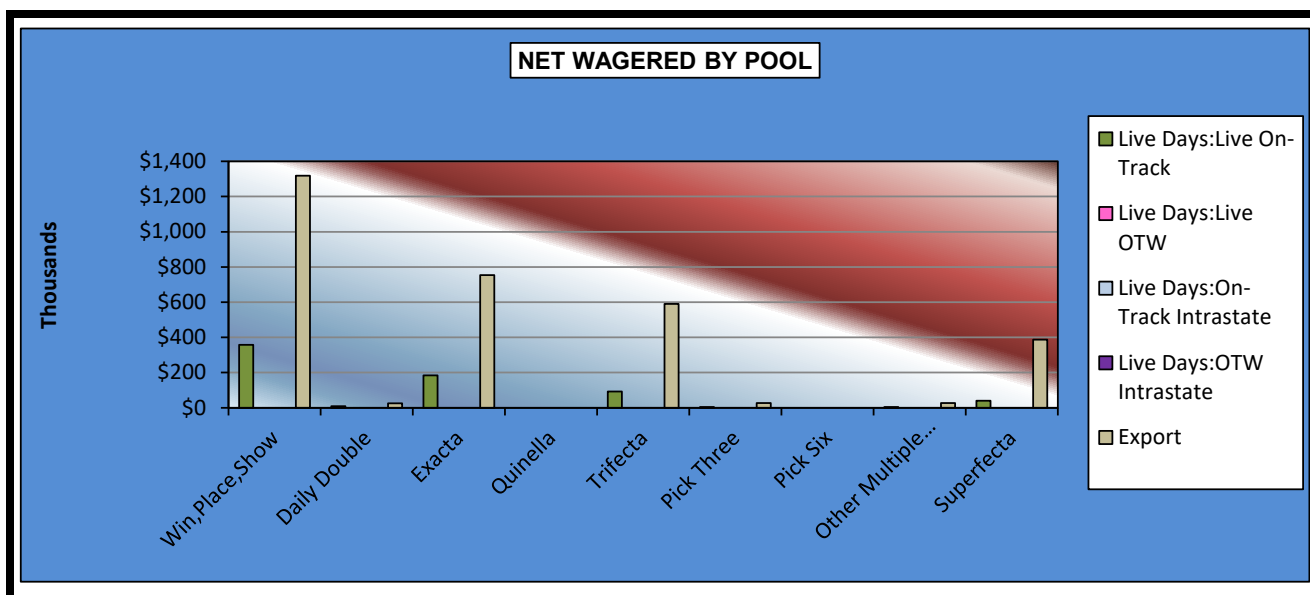
**OKLAHOMA HORSE RACING COMMISSION**  
**STATISTICAL REPORT OF OPERATIONS**  
**FAIR MEADOWS AT TULSA-LIVE RACE DAYS AND SIMULCAST DAYS**  
**DISTRIBUTION SUMMARY OF NET WAGERED-SIMULCAST DAYS**  
**JANUARY 1, 2018 THROUGH DECEMBER 31, 2018**

	Simulcast Days				Grand Total
	Interstate Import		Intrastate Import		
	On-Track	OTW	On-Track	OTW	
NET WAGERED	\$12,443,502.70	\$0.00	\$592,278.40	\$0.00	\$13,035,781.10
COMMISSIONS:					
Licensee	1,049,764.10	0.00	54,589.00	0.00	\$1,104,353.10
Purses	800,927.32	0.00	54,589.00	0.00	\$855,516.32
Host Track	654,718.43	0.00	17,768.45	0.00	\$672,486.88
State Tax	0.00	0.00	0.00	0.00	\$0.00
County Tax (See Note 4)	0.00	0.00	0.00	0.00	\$0.00
City Tax (See Note 4)	0.00	0.00	0.00	0.00	\$0.00
State Auditor	12,443.50	0.00	0.00	0.00	\$12,443.50
Breeding Development Fund Special Account (B.D.F.S.A.)	0.00	0.00	0.00	0.00	\$0.00
OTHERS:					
Breakage	79,616.86	0.00	2,657.23	0.00	\$82,274.09
Outstanding Tickets	22,924.45	0.00	0.00	0.00	\$22,924.45
TOTAL COMMISSIONS AND OTHERS:	\$2,620,394.66	\$0.00	\$129,603.68	\$0.00	\$2,749,998.34
NET PAID TO THE PUBLIC	\$9,823,108.04	\$0.00	\$462,674.72	\$0.00	\$10,285,782.76



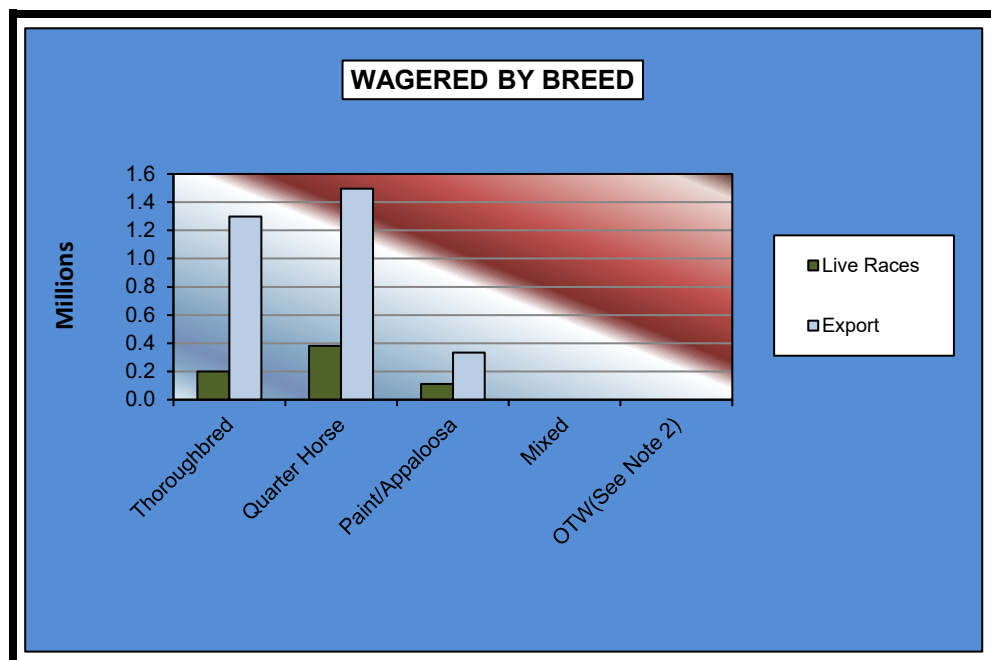
**OKLAHOMA HORSE RACING COMMISSION**  
**STATISTICAL REPORT OF OPERATIONS**  
**FAIR MEADOWS AT TULSA-LIVE RACE DAYS AND SIMULCAST DAYS**  
**NET WAGERED BY POOL**  
**JANUARY 1, 2018 THROUGH DECEMBER 31, 2018**

	Live Days					Grand Total
	Live Races		Intrastate Import		Export	
	On-Track	OTW	On-Track	OTW		
Win,Place,Show	\$357,426.00	\$0.00	\$0.00	\$0.00	\$1,317,665.88	\$1,675,091.88
Daily Double	9,476.00	0.00	0.00	0.00	25,383.50	\$34,859.50
Exacta	184,864.00	0.00	0.00	0.00	754,014.45	\$938,878.45
Quinella	0.00	0.00	0.00	0.00	0.00	\$0.00
Trifecta	92,841.00	0.00	0.00	0.00	590,237.88	\$683,078.88
Pick Three	3,549.50	0.00	0.00	0.00	26,619.00	\$30,168.50
Pick Six	0.00	0.00	0.00	0.00	0.00	\$0.00
Other Multiple Picks	4,131.50	0.00	0.00	0.00	26,584.50	\$30,716.00
Superfecta	40,957.50	0.00	0.00	0.00	388,057.18	\$429,014.68
NET WAGERED	\$693,245.50	\$0.00	\$0.00	\$0.00	\$3,128,562.39	\$3,821,807.89



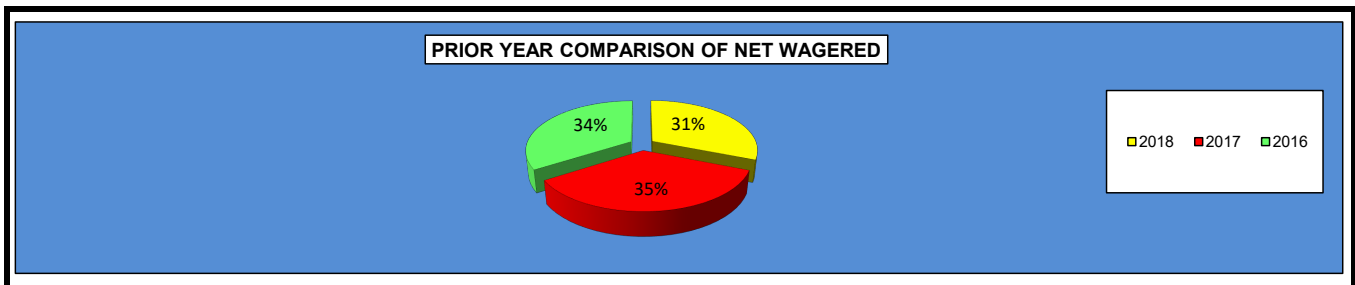
**OKLAHOMA HORSE RACING COMMISSION  
STATISTICAL REPORT OF OPERATIONS  
FAIR MEADOWS AT TULSA-LIVE RACE DAYS AND SIMULCAST DAYS  
NET WAGERED BY BREED  
JANUARY 1, 2018 THROUGH DECEMBER 31, 2018**

	Live Days		Grand Total
	Live Races	Export	
Thoroughbred	\$200,252.80	\$1,298,770.24	\$1,499,023.04
Quarter Horse	380,749.40	1,495,447.90	\$1,876,197.30
Paint/Appaloosa	112,243.30	334,344.25	\$446,587.55
Mixed	0.00	0.00	\$0.00
OTW(See Note 2)	0.00	0.00	\$0.00
<b>Net Wagered</b>	<b>\$693,245.50</b>	<b>\$3,128,562.39</b>	<b>\$3,821,807.89</b>



**OKLAHOMA HORSE RACING COMMISSION**  
**STATISTICAL REPORT OF OPERATIONS**  
**FAIR MEADOWS AT TULSA-LIVE RACE DAYS AND SIMULCAST DAYS**  
**PRIOR YEAR COMPARISON - DISTRIBUTION SUMMARY OF NET WAGERED**  
**JANUARY 1, 2018 THROUGH DECEMBER 31, 2018**

	2018 (See Note 1)	2017 (See Note 1)	2016 (See Note 1)	2017 to 2018 Increase (Decrease)	% Increase (Decrease)	2016 to 2017 Increase (Decrease)	% Increase (Decrease)
<b>NET WAGERED</b>	\$19,341,899.59	\$21,790,876.42	\$21,239,958.16	(\$2,448,976.83)	-11.24%	\$550,918.26	2.59%
<b>COMMISSIONS:</b>							
Licensee	1,463,312.75	1,692,519.51	1,639,981.63	(229,206.76)	-13.54%	52,537.88	3.20%
Purses	1,087,845.32	1,258,254.01	1,213,962.59	(170,408.69)	-13.54%	44,291.42	3.65%
Host Track	807,759.17	962,991.38	954,002.67	(155,232.21)	-16.12%	8,988.71	0.94%
State Tax	0.00	0.00	0.00	0.00	0.00%	0.00	0.00%
County Tax (See Note 4)	0.00	0.00	0.00	0.00	0.00%	0.00	0.00%
City Tax (See Note 4)	0.00	0.00	0.00	0.00	0.00%	0.00	0.00%
State Auditor	14,927.81	17,777.90	17,633.66	(2,850.09)	-16.03%	144.24	0.82%
Breeding Development Fund							
Special Account	3,914.86	4,141.09	3,916.01	(226.23)	-5.46%	225.08	5.75%
<b>OTHERS:</b>							
Breakage	100,933.90	135,499.89	132,097.55	(34,565.99)	-25.51%	3,402.34	2.58%
Outstanding Tickets	22,924.45	20,242.35	17,965.52	2,682.10	13.25%	2,276.83	12.67%
<b>TOTAL COMMISSIONS AND OTHERS</b>	\$3,501,618.26	\$4,091,426.13	\$3,979,559.63	(\$589,807.87)	-14.42%	\$111,866.50	2.81%



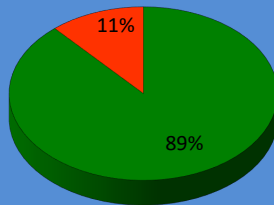
**OKLAHOMA HORSE RACING COMMISSION**  
**STATISTICAL REPORT OF OPERATIONS**  
**FAIR MEADOWS AT TULSA-LIVE RACE DAYS AND SIMULCAST DAYS**  
**PRIOR YEAR COMPARISON - DISTRIBUTION SUMMARY OF NET WAGERED**  
**JANUARY 1, 2018 THROUGH DECEMBER 31, 2018**

	2018 (See Note 1)	2017 (See Note 1)	2016 (See Note 1)	2017 to 2018 Increase (Decrease)	% Increase (Decrease)	2016 to 2017 Increase (Decrease)	% Increase (Decrease)
<b>NET WAGERED</b>	\$19,341,899.59	\$21,790,876.42	\$21,239,958.16	(\$2,448,976.83)	-11.24%	\$550,918.26	2.59%
Number of Race Days	329	329	321	0	0.00%	8	2.49%
Number of Live Days	34	34	34	0	0.00%	0	0.00%
Average Daily Handle	\$58,789.97	\$66,233.67	\$66,168.09	(\$7,443.70)	-11.24%	\$65.58	0.10%
<b>LIVE RACES</b>							
Average Wagered Per Race:							
Thoroughbred	\$9,609.12	\$8,368.92	\$6,899.64	\$1,240.20	14.82%	\$1,469.28	21.30%
Quarter Horse	\$10,196.72	\$9,962.33	\$8,357.85	\$234.39	2.35%	\$1,604.48	19.20%
Paint/Appaloosa	\$6,977.93	\$6,369.09	\$4,556.64	\$608.84	9.56%	\$1,812.45	39.78%
Mixed	\$0.00	\$0.00	\$0.00	\$0.00	0.00%	\$0.00	0.00%
OTW	\$0.00	\$0.00	\$0.00	\$0.00	0.00%	\$0.00	0.00%
Average Races Per Day:							
Thoroughbred	4.59	4.88	4.74	(0.29)	-5.98%	0.14	2.95%
Quarter Horse	5.41	4.61	5.44	0.80	17.39%	(0.83)	-15.26%
Paint/Appaloosa	1.88	1.35	1.91	0.53	39.43%	(0.56)	-29.32%
Mixed	0.00	0.00	0.00	0.00	0.00%	0.00	0.00%
OTW	0.00	0.00	0.00	0.00	0.00%	0.00	0.00%

**OKLAHOMA HORSE RACING COMMISSION  
STATISTICAL REPORT OF OPERATIONS  
REMINGTON PARK-LIVE RACE DAYS AND SIMULCAST DAYS  
DISTRIBUTION SUMMARY OF NET WAGERED  
JANUARY 1, 2018 THROUGH DECEMBER 31, 2018**

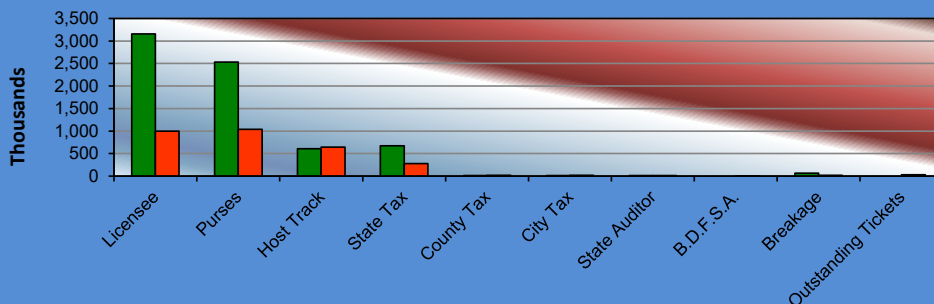
	Live Days	Exports (see Note 1)	Total	Simulcast Days	Grand Total
<b>NET WAGERED</b>	\$19,200,767.10	\$88,819,613.50	\$108,020,380.60	\$14,016,354.60	\$122,036,735.20
<b>COMMISSIONS:</b>					
Licensee	1,571,471.33	1,583,874.81	\$3,155,346.14	998,174.85	\$4,153,520.99
Purses	1,390,756.79	1,140,175.63	\$2,530,932.42	1,038,817.76	\$3,569,750.18
Host Track	608,938.30	0.00	\$608,938.30	643,783.10	\$1,252,721.40
State Tax	384,015.35	288,172.81	\$672,188.16	280,327.14	\$952,515.30
County Tax (See Note 4)	14,974.64	0.00	\$14,974.64	20,113.81	\$35,088.45
City Tax (See Note 4)	14,974.64	0.00	\$14,974.64	20,113.81	\$35,088.45
State Auditor	11,888.85	0.00	\$11,888.85	13,876.59	\$25,765.44
Breeding Development Fund Special Account (B.D.F.S.A.)	19,790.61	45,374.13	\$65,164.74	400.22	\$65,564.96
<b>OTHERS:</b>					
Breakage	34,378.71	0.00	\$34,378.71	20,026.03	\$54,404.74
Outstanding Tickets (See Note 3)	0.00	0.00	\$0.00	32,987.13	\$32,987.13
<b>TOTAL COMMISSIONS AND OTHERS:</b>	\$4,051,189.22	\$3,057,597.38	\$7,108,786.60	\$3,068,620.44	\$10,177,407.04
<b>NET PAID TO THE PUBLIC</b>	\$15,149,577.88	\$85,762,016.12	\$100,911,594.00	\$10,947,734.16	\$111,859,328.16

**NET WAGERED \$122,036,735.20**



■ Live Days & Exports  
■ Simulcast Days

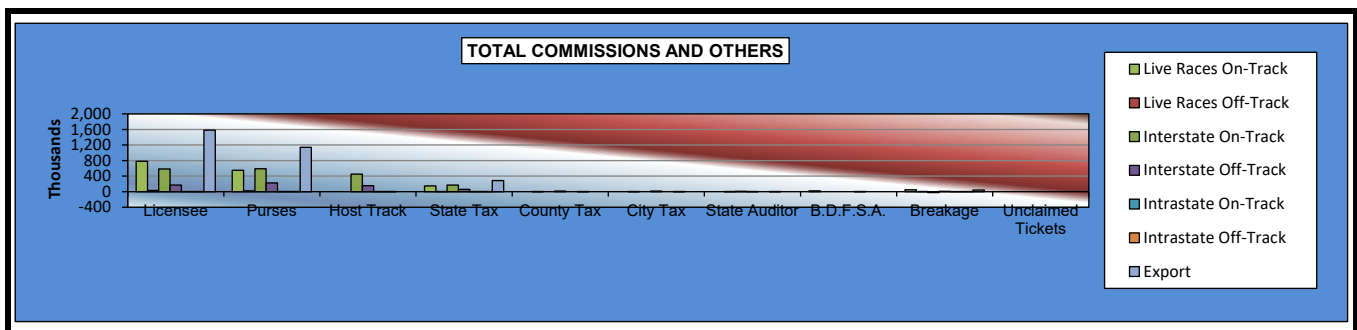
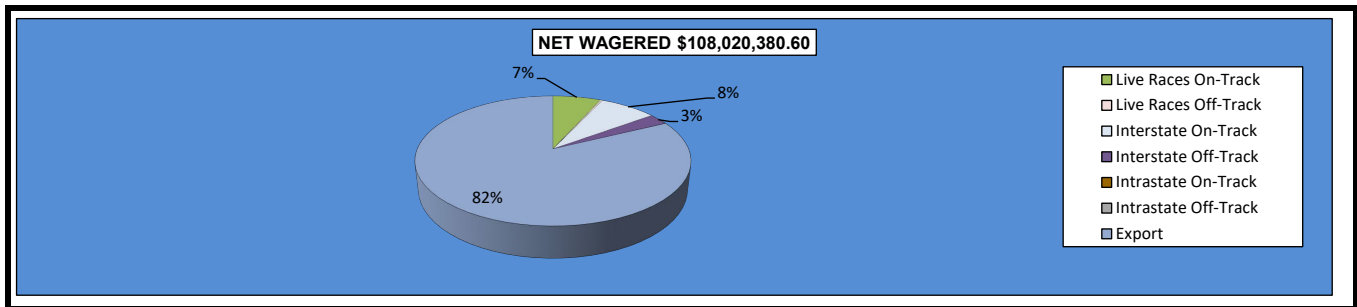
**TOTAL COMMISSIONS AND OTHERS**



■ Live Days & Exports  
■ Simulcast Days

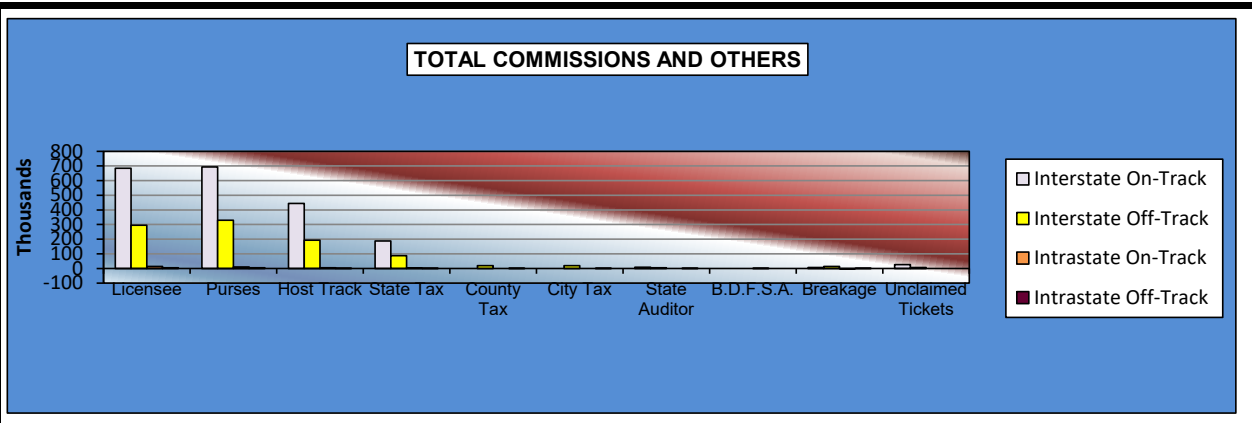
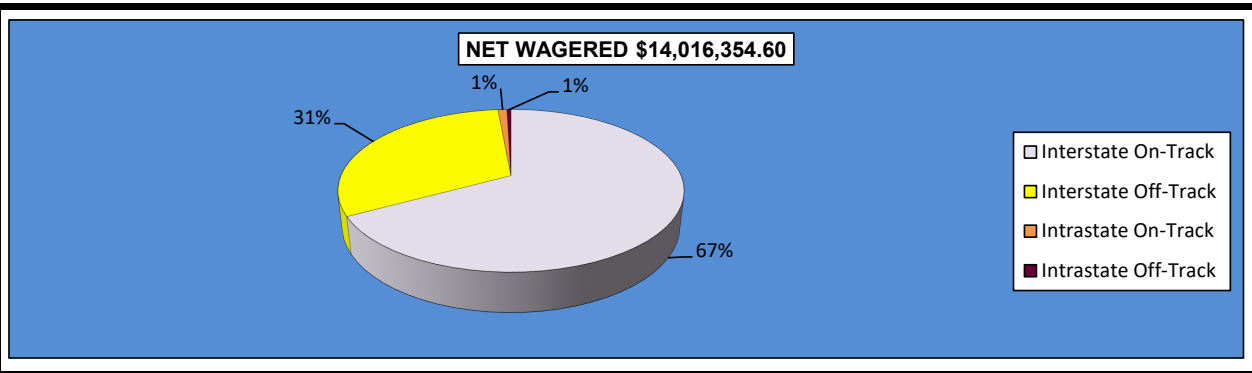
**OKLAHOMA HORSE RACING COMMISSION  
STATISTICAL REPORT OF OPERATIONS  
REMINGTON PARK-LIVE RACE DAYS AND SIMULCAST DAYS  
DISTRIBUTION SUMMARY OF NET WAGERED-LIVE DAYS  
JANUARY 1, 2018 THROUGH DECEMBER 31, 2018**

	Live Days							
	Live		Interstate Import		Intrastate Import		Export	Grand Total
	On-Track	OTW	On-Track	OTW	On-Track	OTW		
<b>NET WAGERED</b>	\$7,275,544.60	\$287,922.70	\$8,561,162.60	\$3,025,916.50	\$36,361.30	\$13,859.40	\$88,819,613.50	\$108,020,380.60
<b>COMMISSIONS:</b>								
Licensee	780,785.70	33,514.44	581,265.91	171,341.66	3,422.85	1,140.77	1,583,874.81	\$3,155,346.14
Purses	548,799.47	21,594.34	589,827.18	226,944.15	2,552.18	1,039.47	1,140,175.63	\$2,530,932.42
Host Track	0.00	0.00	452,178.18	155,253.46	1,090.87	415.79	0.00	\$608,938.30
State Tax	145,510.90	5,758.47	171,223.19	60,518.37	727.24	277.18	288,172.81	\$672,188.16
County Tax (See Note 4)	0.00	1,295.65	0.00	13,616.62	0.00	62.37	0.00	\$14,974.64
City Tax (See Note 4)	0.00	1,295.65	0.00	13,616.62	0.00	62.37	0.00	\$14,974.64
State Auditor	0.00	287.92	8,561.16	3,025.91	0.00	13.86	0.00	\$11,888.85
Breeding Development Fund Special Account (B.D.F.S.A.)	19,678.49	0.00	0.00	0.00	112.12	0.00	45,374.13	\$65,164.74
<b>OTHERS:</b>								
Breakage	48,016.27	913.41	-24,102.75	9,399.99	111.73	40.06	0.00	\$34,378.71
Outstanding Tickets	0.00	0.00	0.00	0.00	0.00	0.00	0.00	\$0.00
<b>TOTAL COMMISSIONS AND OTHERS:</b>	\$1,542,790.83	\$64,659.88	\$1,778,952.87	\$653,716.78	\$8,016.99	\$3,051.87	\$3,057,597.38	\$7,108,786.60
<b>NET PAID TO THE PUBLIC</b>	\$5,732,753.77	\$223,262.82	\$6,782,209.73	\$2,372,199.72	\$28,344.31	\$10,807.53	\$85,762,016.12	\$100,911,594.00



**OKLAHOMA HORSE RACING COMMISSION  
STATISTICAL REPORT OF OPERATIONS  
REMINGTON PARK-LIVE RACE DAYS AND SIMULCAST DAYS  
DISTRIBUTION SUMMARY OF NET WAGERED-SIMULCAST DAYS  
JANUARY 1, 2018 THROUGH DECEMBER 31, 2018**

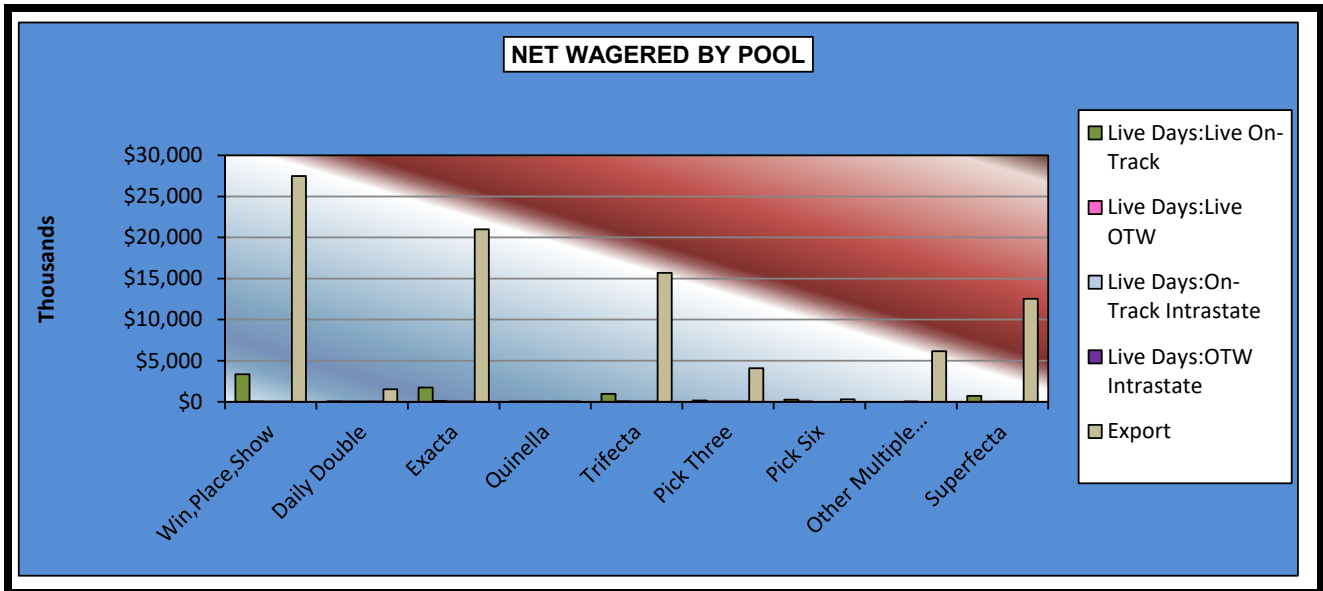
	Simulcast Days				Grand Total
	Interstate Import		Intrastate Import		
	On-Track	OTW	On-Track	OTW	
NET WAGERED	\$9,406,843.60	\$4,405,633.80	\$139,777.20	\$64,100.00	\$14,016,354.60
COMMISSIONS:					
Licensee	684,445.72	295,221.86	13,113.84	5,393.43	\$998,174.85
Purses	693,852.82	330,423.55	9,733.88	4,807.51	\$1,038,817.76
Host Track	443,734.41	193,932.30	4,193.38	1,923.01	\$643,783.10
State Tax	188,136.87	88,112.72	2,795.54	1,282.01	\$280,327.14
County Tax (See Note 4)	0.00	19,825.36	0.00	288.45	\$20,113.81
City Tax (See Note 4)	0.00	19,825.36	0.00	288.45	\$20,113.81
State Auditor	9,406.85	4,405.64	0.00	64.10	\$13,876.59
Breeding Development Fund Special Account (B.D.F.S.A.)	0.00	0.00	400.22	0.00	\$400.22
OTHERS:					
Breakage	7,488.68	13,783.09	-1,459.99	214.25	\$20,026.03
Outstanding Tickets	26,355.96	6,631.17	0.00	0.00	\$32,987.13
TOTAL COMMISSIONS AND OTHERS:	\$2,053,421.31	\$972,161.05	\$28,776.87	\$14,261.21	\$3,068,620.44
NET PAID TO THE PUBLIC	\$7,353,422.29	\$3,433,472.75	\$111,000.33	\$49,838.79	\$10,947,734.16





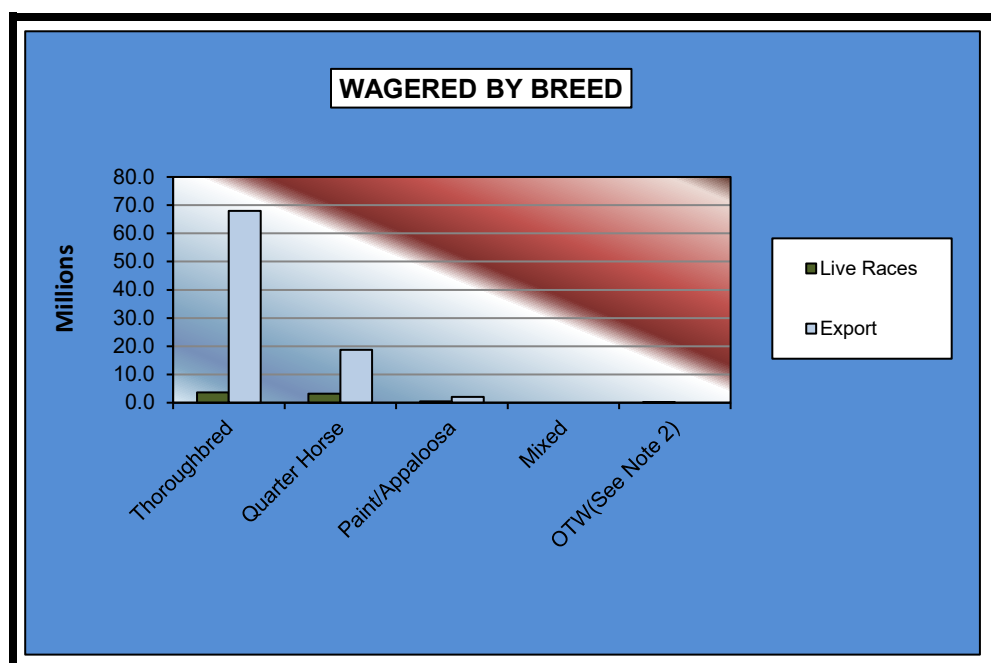
**OKLAHOMA HORSE RACING COMMISSION**  
**STATISTICAL REPORT OF OPERATIONS**  
**REMINGTON PARK-LIVE RACE DAYS AND SIMULCAST DAYS**  
**NET WAGERED BY POOL**  
**JANUARY 1, 2018 THROUGH DECEMBER 31, 2018**

	Live Days					Grand Total
	Live Races		Intrastate Import		Export	
	On-Track	OTW	On-Track	OTW		
Win,Place,Show	\$3,339,844.00	\$52,876.00	\$8,355.00	\$2,809.00	\$27,495,539.72	\$30,899,423.72
Daily Double	71,617.00	7,595.00	196.00	141.00	1,534,250.85	\$1,613,799.85
Exacta	1,739,088.00	77,387.00	9,537.00	4,539.00	20,985,301.24	\$22,815,852.24
Quinella	24,596.00	2,192.00	792.00	177.00	2,086.50	\$29,843.50
Trifecta	974,202.50	66,771.50	8,581.00	4,161.50	15,693,612.04	\$16,747,328.54
Pick Three	151,542.00	18,037.00	68.00	27.00	4,102,467.28	\$4,272,141.28
Pick Six	257,803.00	25,717.00	0.00	0.00	306,815.98	\$590,335.98
Other Multiple Picks	0.00	0.00	247.00	0.00	6,145,617.14	\$6,145,864.14
Superfecta	716,852.10	37,347.20	8,585.30	2,004.90	12,553,922.75	\$13,318,712.25
NET WAGERED	\$7,275,544.60	\$287,922.70	\$36,361.30	\$13,859.40	\$88,819,613.50	\$96,433,301.50



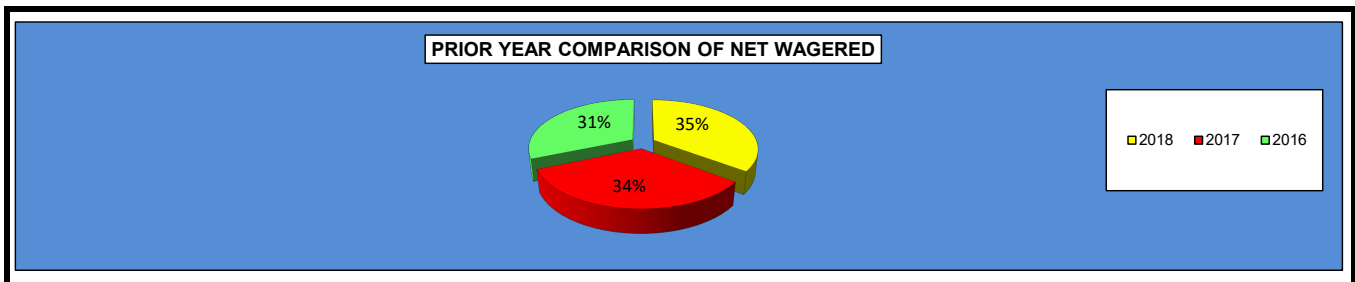
**OKLAHOMA HORSE RACING COMMISSION  
STATISTICAL REPORT OF OPERATIONS  
REMINGTON PARK-LIVE RACE DAYS AND SIMULCAST DAYS  
NET WAGERED BY BREED  
JANUARY 1, 2018 THROUGH DECEMBER 31, 2018**

	Live Days		Grand Total
	Live Races	Export	
<b>Thoroughbred</b>	\$3,615,777.70	\$68,021,941.93	\$71,637,719.63
<b>Quarter Horse</b>	3,208,946.50	18,723,224.82	\$21,932,171.32
<b>Paint/Appaloosa</b>	450,820.40	2,074,446.75	\$2,525,267.15
<b>Mixed</b>	0.00	0.00	\$0.00
<b>OTW(See Note 2)</b>	287,922.70	0.00	\$287,922.70
<b>Net Wagered</b>	\$7,563,467.30	\$88,819,613.50	\$96,383,080.80



**OKLAHOMA HORSE RACING COMMISSION  
STATISTICAL REPORT OF OPERATIONS  
REMINGTON PARK-LIVE RACE DAYS AND SIMULCAST DAYS  
PRIOR YEAR COMPARISON - DISTRIBUTION SUMMARY OF NET WAGERED  
JANUARY 1, 2018 THROUGH DECEMBER 31, 2018**

	2018 (See Note 1)	2017 (See Note 1)	2016 (See Note 1)	2017 to 2018 Increase (Decrease)	% Increase (Decrease)	2016 to 2017 Increase (Decrease)	% Increase (Decrease)
<b>NET WAGERED</b>	\$122,036,735.20	\$115,934,527.41	\$108,483,986.75	\$6,102,207.79	5.26%	\$7,450,540.66	6.87%
<b>COMMISSIONS:</b>							
Licensee	4,153,520.99	3,989,592.73	4,013,887.37	163,928.26	4.11%	(24,294.64)	-0.61%
Purses	3,569,750.18	3,481,191.22	3,587,870.72	88,558.96	2.54%	(106,679.50)	-2.97%
Host Track	1,252,721.40	1,298,159.41	1,460,405.44	(45,438.01)	-3.50%	(162,246.03)	-11.11%
State Tax	952,515.30	931,133.72	968,178.87	21,381.58	2.30%	(37,045.15)	-3.83%
County Tax (See Note 4)	35,088.45	39,294.50	48,374.52	(4,206.05)	-10.70%	(9,080.02)	-18.77%
City Tax (See Note 4)	35,088.45	39,294.50	48,374.52	(4,206.05)	-10.70%	(9,080.02)	-18.77%
State Auditor	25,765.44	26,830.50	30,344.06	(1,065.06)	-3.97%	(3,513.56)	-11.58%
Breeding Development Fund							
Special Account	65,564.96	58,964.28	53,172.54	6,600.68	11.19%	5,791.74	10.89%
<b>OTHERS:</b>							
Breakage	54,404.74	134,809.61	163,016.60	(80,404.87)	-59.64%	(28,206.99)	-17.30%
Outstanding Tickets	32,987.13	31,834.14	43,027.62	1,152.99	3.62%	(11,193.48)	-26.01%
<b>TOTAL COMMISSIONS AND OTHERS</b>	\$10,177,407.04	\$10,031,104.61	\$10,416,652.26	\$146,302.43	1.46%	(\$385,547.65)	-3.70%



**OKLAHOMA HORSE RACING COMMISSION  
STATISTICAL REPORT OF OPERATIONS  
REMINGTON PARK-LIVE RACE DAYS AND SIMULCAST DAYS  
PRIOR YEAR COMPARISON - DISTRIBUTION SUMMARY OF NET WAGERED  
JANUARY 1, 2018 THROUGH DECEMBER 31, 2018**

	2018 (See Note 1)	2017 (See Note 1)	2016 (See Note 1)	2017 to 2018 Increase (Decrease)	% Increase (Decrease)	2016 to 2017 Increase (Decrease)	% Increase (Decrease)
<b>NET WAGERED</b>	\$122,036,735.20	\$115,934,527.41	\$108,483,986.75	\$6,102,207.79	5.26%	\$7,450,540.66	6.87%
Number of Race Days	363	365	365	(2)	-0.55%	0	0.00%
Number of Live Days	117	117	117	0	0.00%	0	0.00%
Average Daily Handle	\$336,189.35	\$317,628.84	\$297,216.40	\$18,560.51	5.84%	\$20,412.44	6.87%
<b>LIVE RACES</b>							
Average Wagered Per Race:							
Thoroughbred	\$118,214.06	\$110,337.01	\$131,334.54	\$7,877.05	7.14%	(\$20,997.53)	-15.99%
Quarter Horse	\$45,220.97	\$41,535.28	\$38,788.69	\$3,685.69	8.87%	\$2,746.59	7.08%
Paint/Appaloosa	\$29,709.03	\$25,779.15	\$23,023.18	\$3,929.88	15.24%	\$2,755.97	11.97%
Mixed	\$0.00	\$0.00	\$0.00	\$0.00	0.00%	\$0.00	0.00%
OTW	\$244.83	\$274.07	\$378.83	(\$29.24)	-10.67%	(\$104.76)	-27.65%
Average Races Per Day:							
Thoroughbred	9.04	9.16	6.49	(0.12)	-1.26%	2.67	41.14%
Quarter Horse	7.24	9.78	9.88	(2.54)	-25.98%	(0.10)	-1.01%
Paint/Appaloosa	1.70	1.52	1.44	0.18	11.84%	0.08	5.56%
Mixed	0.00	0.00	0.00	0.00	0.00%	0.00	0.00%
OTW	10.05	10.00	8.90	0.05	0.51%	1.10	12.36%

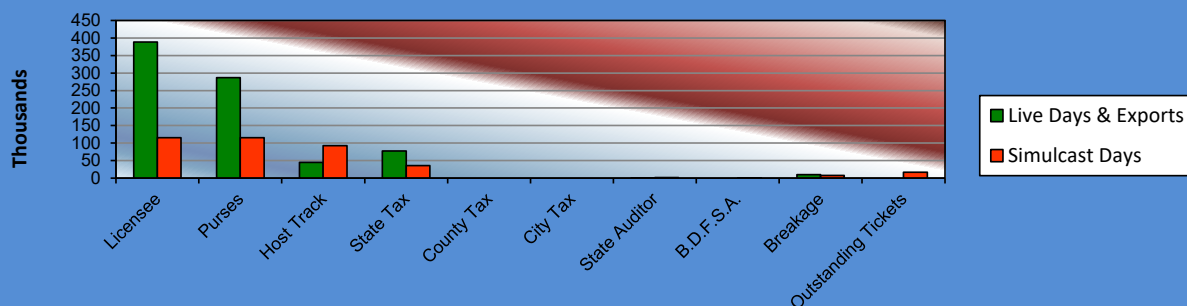
**OKLAHOMA HORSE RACING COMMISSION  
STATISTICAL REPORT OF OPERATIONS  
WILL ROGERS DOWNS-LIVE RACE DAYS AND SIMULCAST DAYS  
DISTRIBUTION SUMMARY OF NET WAGERED  
JANUARY 1, 2018 THROUGH DECEMBER 31, 2018**

	Live Days	Exports (see Note 1)	Total	Simulcast Days	Grand Total
<b>NET WAGERED</b>	\$1,291,515.50	\$17,960,054.95	\$19,251,570.45	\$1,778,482.30	\$21,030,052.75
<b>COMMISSIONS:</b>					
Licensee	105,303.75	283,345.62	\$388,649.37	115,494.94	\$504,144.31
Purses	83,904.39	203,086.11	\$286,990.50	115,408.15	\$402,398.65
Host Track	44,721.45	0.00	\$44,721.45	92,939.06	\$137,660.51
State Tax	25,830.33	51,387.27	\$77,217.60	35,569.76	\$112,787.36
County Tax (See Note 4)	0.00	0.00	\$0.00	0.00	\$0.00
City Tax (See Note 4)	0.00	0.00	\$0.00	0.00	\$0.00
State Auditor	618.15	0.00	\$618.15	1,707.55	\$2,325.70
Breeding Development Fund Special Account (B.D.F.S.A.)	1,584.43	8,102.54	\$9,686.97	173.17	\$9,860.14
<b>OTHERS:</b>					
Breakage	7,124.71	0.00	\$7,124.71	7,950.67	\$15,075.38
Outstanding Tickets (See Note 3)	0.00	0.00	\$0.00	16,816.23	\$16,816.23
<b>TOTAL COMMISSIONS AND OTHERS:</b>	\$269,087.21	\$545,921.54	\$815,008.75	\$386,059.53	\$1,201,068.28
<b>NET PAID TO THE PUBLIC</b>	\$1,022,428.29	\$17,414,133.41	\$18,436,561.70	\$1,392,422.77	\$19,828,984.47

**NET WAGERED \$21,030,052.75**

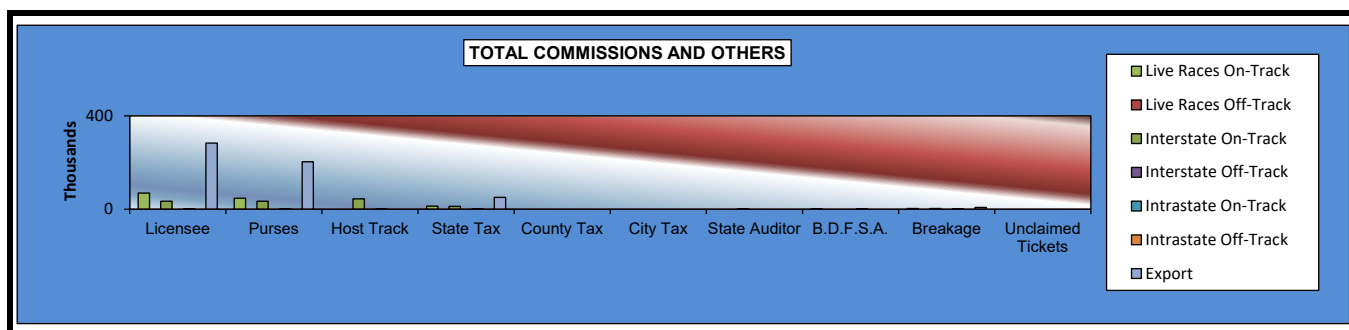
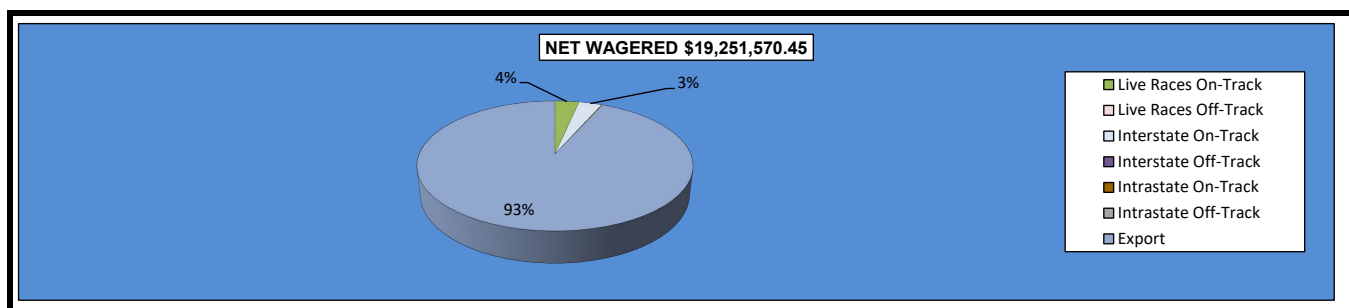


**TOTAL COMMISSIONS AND OTHERS**



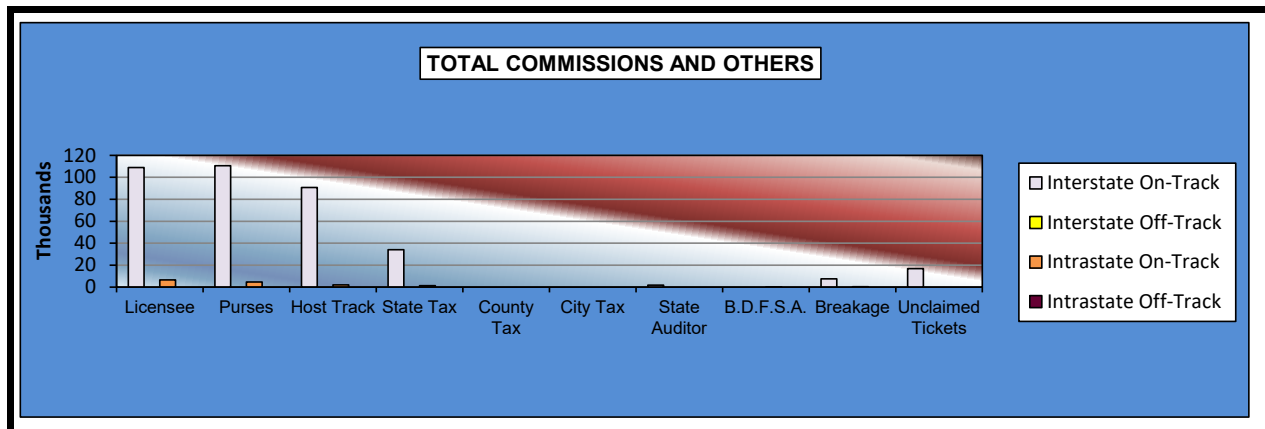
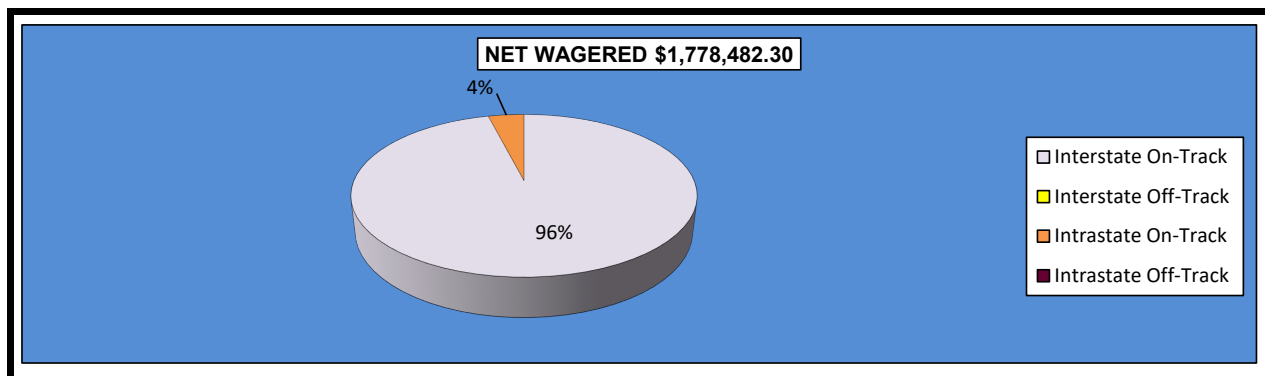
**OKLAHOMA HORSE RACING COMMISSION**  
**STATISTICAL REPORT OF OPERATIONS**  
**WILL ROGERS DOWNS-LIVE RACE DAYS AND SIMULCAST DAYS**  
**DISTRIBUTION SUMMARY OF NET WAGERED-LIVE DAYS**  
**JANUARY 1, 2018 THROUGH DECEMBER 31, 2018**

	Live Days							
	Live		Interstate Import		Intrastate Import		Export	Grand Total
	On-Track	OTW	On-Track	OTW	On-Track	OTW		
NET WAGERED	\$651,652.60	\$0.00	\$618,146.30	\$0.00	\$21,716.60	\$0.00	\$17,960,054.95	\$19,251,570.45
COMMISSIONS:								
Licensee	69,098.93	0.00	34,221.27	0.00	1,983.55	0.00	283,345.62	\$388,649.37
Purses	47,643.37	0.00	34,839.52	0.00	1,421.50	0.00	203,086.11	\$286,990.50
Host Track	0.00	0.00	44,069.95	0.00	651.50	0.00	0.00	\$44,721.45
State Tax	13,033.08	0.00	12,362.91	0.00	434.34	0.00	51,387.27	\$77,217.60
County Tax (See Note 4)	0.00	0.00	0.00	0.00	0.00	0.00	0.00	\$0.00
City Tax (See Note 4)	0.00	0.00	0.00	0.00	0.00	0.00	0.00	\$0.00
State Auditor	0.00	0.00	618.15	0.00	0.00	0.00	0.00	\$618.15
Breeding Development Fund Special Account (B.D.F.S.A.)	1,536.86	0.00	0.00	0.00	47.57	0.00	8,102.54	\$9,686.97
OTHERS:								
Breakage	3,554.73	0.00	3,447.69	0.00	122.29	0.00	0.00	\$7,124.71
Outstanding Tickets	0.00	0.00	0.00	0.00	0.00	0.00	0.00	\$0.00
TOTAL COMMISSIONS AND OTHERS:	\$134,866.97	\$0.00	\$129,559.49	\$0.00	\$4,660.75	\$0.00	\$545,921.54	\$815,008.75
NET PAID TO THE PUBLIC	\$516,785.63	\$0.00	\$488,586.81	\$0.00	\$17,055.85	\$0.00	\$17,414,133.41	\$18,436,561.70



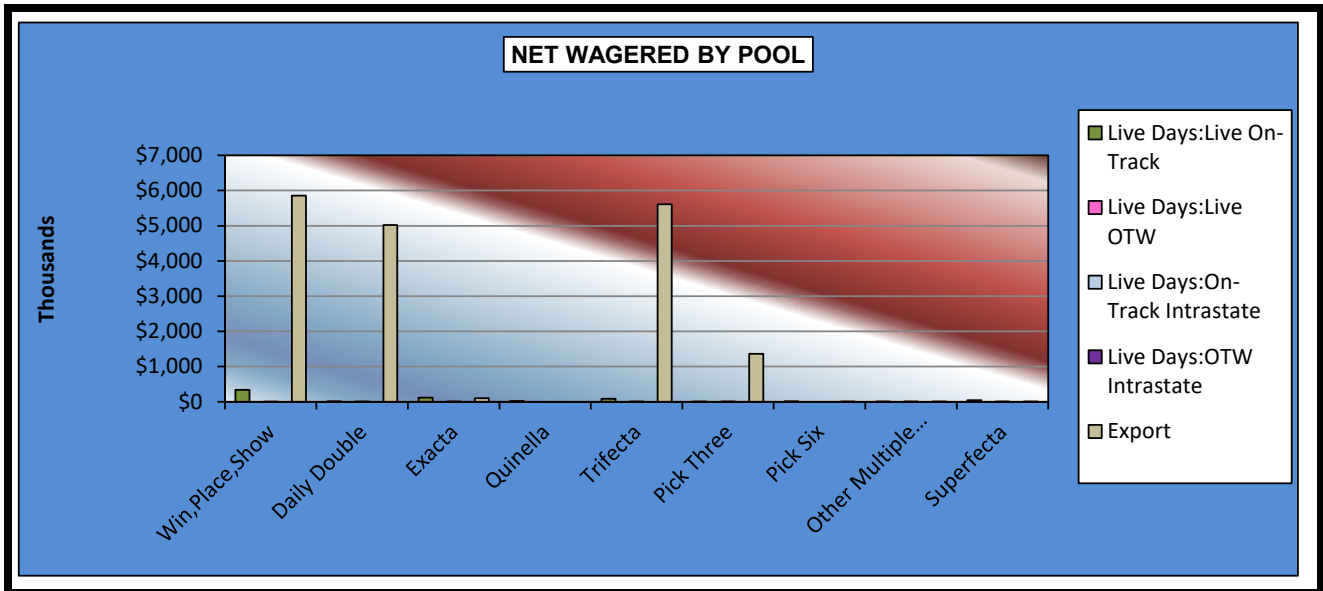
**OKLAHOMA HORSE RACING COMMISSION**  
**STATISTICAL REPORT OF OPERATIONS**  
**WILL ROGERS DOWNS-LIVE RACE DAYS AND SIMULCAST DAYS**  
**DISTRIBUTION SUMMARY OF NET WAGERED-SIMULCAST DAYS**  
**JANUARY 1, 2018 THROUGH DECEMBER 31, 2018**

	Simulcast Days				Grand Total
	Interstate Import		Intrastate Import		
	On-Track	OTW	On-Track	OTW	
NET WAGERED	\$1,707,547.60	\$0.00	\$70,934.70	\$0.00	\$1,778,482.30
COMMISSIONS:					
Licensee	108,919.12	0.00	6,575.82	0.00	\$115,494.94
Purses	110,626.86	0.00	4,781.29	0.00	\$115,408.15
Host Track	90,810.95	0.00	2,128.11	0.00	\$92,939.06
State Tax	34,151.05	0.00	1,418.71	0.00	\$35,569.76
County Tax (See Note 4)	0.00	0.00	0.00	0.00	\$0.00
City Tax (See Note 4)	0.00	0.00	0.00	0.00	\$0.00
State Auditor	1,707.55	0.00	0.00	0.00	\$1,707.55
Breeding Development Fund Special Account (B.D.F.S.A.)	0.00	0.00	173.17	0.00	\$173.17
OTHERS:					
Breakage	7,564.05	0.00	386.62	0.00	\$7,950.67
Outstanding Tickets	16,816.23	0.00	0.00	0.00	\$16,816.23
TOTAL COMMISSIONS AND OTHERS:	\$370,595.81	\$0.00	\$15,463.72	\$0.00	\$386,059.53
NET PAID TO THE PUBLIC	\$1,336,951.79	\$0.00	\$55,470.98	\$0.00	\$1,392,422.77



**OKLAHOMA HORSE RACING COMMISSION**  
**STATISTICAL REPORT OF OPERATIONS**  
**WILL ROGERS DOWNS-LIVE RACE DAYS AND SIMULCAST DAYS**  
**NET WAGERED BY POOL**  
**JANUARY 1, 2018 THROUGH DECEMBER 31, 2018**

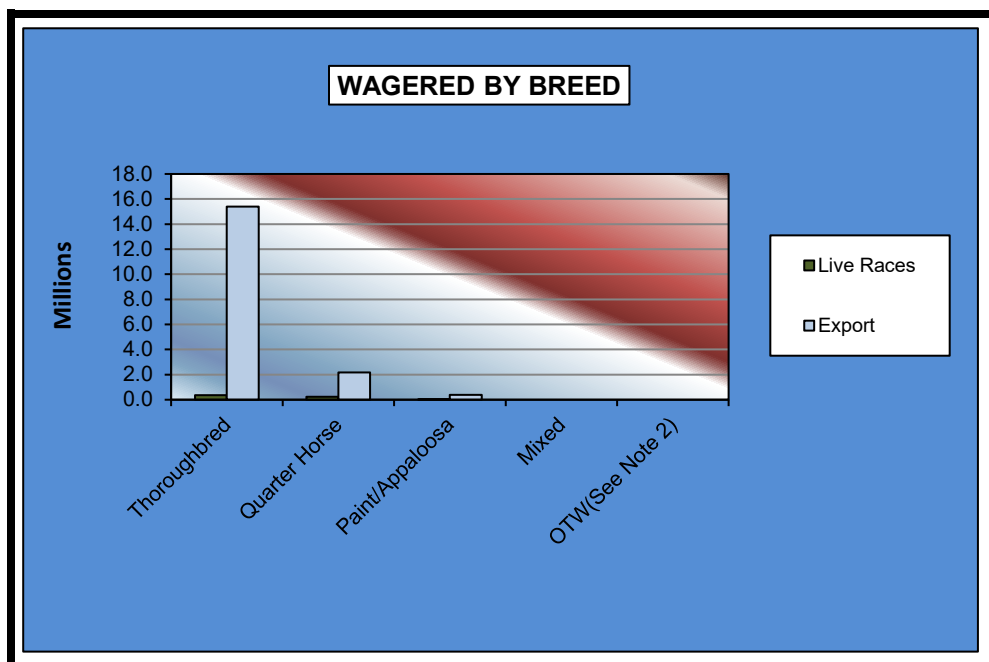
	Live Days					Grand Total
	Live Races		Intrastate Import		Export	
	On-Track	OTW	On-Track	OTW		
Win,Place,Show	\$344,280.00	\$0.00	\$8,774.00	\$0.00	\$5,859,065.94	\$6,212,119.94
Daily Double	11,416.00	0.00	302.00	0.00	5,017,281.38	\$5,028,999.38
Exacta	121,394.00	0.00	4,882.00	0.00	99,593.82	\$225,869.82
Quinella	21,872.00	0.00	0.00	0.00	0.00	\$21,872.00
Trifecta	84,189.00	0.00	3,709.50	0.00	5,613,536.74	\$5,701,435.24
Pick Three	6,811.00	0.00	459.00	0.00	1,367,362.15	\$1,374,632.15
Pick Six	13,510.50	0.00	0.00	0.00	1,423.26	\$14,933.76
Other Multiple Picks	950.50	0.00	1,155.70	0.00	1,630.16	\$3,736.36
Superfecta	47,229.60	0.00	2,434.40	0.00	161.50	\$49,825.50
NET WAGERED	\$651,652.60	\$0.00	\$21,716.60	\$0.00	\$17,960,054.95	\$18,633,424.15





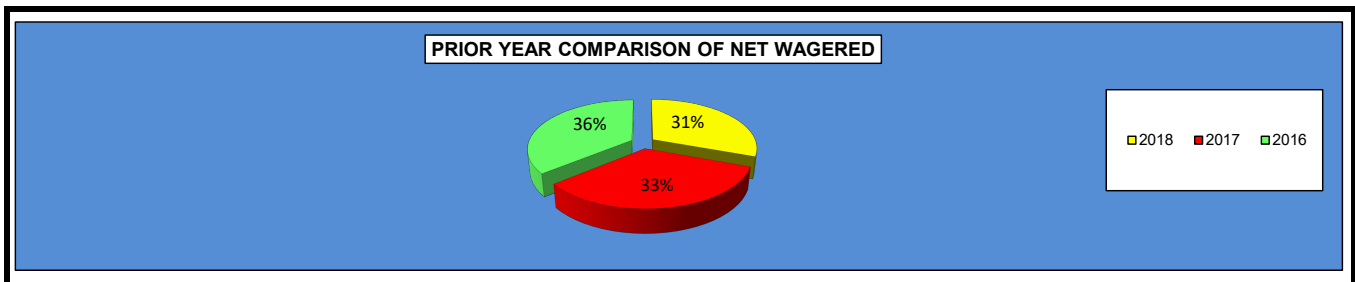
**OKLAHOMA HORSE RACING COMMISSION  
STATISTICAL REPORT OF OPERATIONS  
WILL ROGERS DOWNS-LIVE RACE DAYS AND SIMULCAST DAYS  
NET WAGERED BY BREED  
JANUARY 1, 2018 THROUGH DECEMBER 31, 2018**

	Live Days		Grand Total
	Live Races	Export	
Thoroughbred	\$368,157.00	\$15,395,504.56	\$15,763,661.56
Quarter Horse	242,634.80	2,164,532.70	\$2,407,167.50
Paint/Appaloosa	40,860.80	400,017.69	\$440,878.49
Mixed	0.00	0.00	\$0.00
OTW(See Note 2)	0.00	0.00	\$0.00
<b>Net Wagered</b>	<b>\$651,652.60</b>	<b>\$17,960,054.95</b>	<b>\$18,611,707.55</b>



**OKLAHOMA HORSE RACING COMMISSION  
STATISTICAL REPORT OF OPERATIONS  
WILL ROGERS DOWNS-LIVE RACE DAYS AND SIMULCAST DAYS  
PRIOR YEAR COMPARISON - DISTRIBUTION SUMMARY OF NET WAGERED  
JANUARY 1, 2018 THROUGH DECEMBER 31, 2018**

	2018 (See Note 1)	2017 (See Note 1)	2016 (See Note 1)	2017 to 2018 Increase (Decrease)	% Increase (Decrease)	2016 to 2017 Increase (Decrease)	% Increase (Decrease)
<b>NET WAGERED</b>	\$21,030,052.75	\$22,971,266.70	\$24,708,248.84	(\$1,941,213.95)	-8.45%	(\$1,736,982.14)	-7.03%
<b>COMMISSIONS:</b>							
Licensee	504,144.31	546,158.36	585,621.24	(42,014.05)	-7.69%	(39,462.88)	-6.74%
Purses	402,398.65	438,548.51	470,229.89	(36,149.86)	-8.24%	(31,681.38)	-6.74%
Host Track	137,660.51	163,147.67	156,386.71	(25,487.16)	-15.62%	6,760.96	4.32%
State Tax	112,787.36	124,734.48	130,979.86	(11,947.12)	-9.58%	(6,245.38)	-4.77%
County Tax (See Note 4)	0.00	0.00	0.00	0.00	0.00%	0.00	0.00%
City Tax (See Note 4)	0.00	0.00	0.00	0.00	0.00%	0.00	0.00%
State Auditor	2,325.70	2,713.69	2,727.48	(387.99)	-14.30%	(13.79)	-0.51%
Breeding Development Fund							
Special Account	9,860.14	10,580.81	11,907.64	(720.67)	-6.81%	(1,326.83)	-11.14%
<b>OTHERS:</b>							
Breakage	15,075.38	17,957.51	19,809.00	(2,882.13)	-16.05%	(1,851.49)	-9.35%
Outstanding Tickets	16,816.23	8,777.41	9,126.29	8,038.82	91.59%	(348.88)	-3.82%
<b>TOTAL COMMISSIONS AND OTHERS</b>	\$1,201,068.28	\$1,312,618.44	\$1,386,788.11	(\$111,550.16)	-8.50%	(\$74,169.67)	-5.35%



**OKLAHOMA HORSE RACING COMMISSION**  
**STATISTICAL REPORT OF OPERATIONS**  
**WILL ROGERS DOWNS-LIVE RACE DAYS AND SIMULCAST DAYS**  
**PRIOR YEAR COMPARISON - DISTRIBUTION SUMMARY OF NET WAGERED**  
**JANUARY 1, 2018 THROUGH DECEMBER 31, 2018**

	2018 (See Note 1)	2017 (See Note 1)	2016 (See Note 1)	2017 to 2018 Increase (Decrease)	% Increase (Decrease)	2016 to 2017 Increase (Decrease)	% Increase (Decrease)
<b>NET WAGERED</b>	\$21,030,052.75	\$22,971,266.70	\$24,708,248.84	(\$1,941,213.95)	-8.45%	(\$1,736,982.14)	-7.03%
Number of Race Days	363	365	365	(2)	-0.55%	0	0.00%
Number of Live Days	58	57	58	1	1.75%	(1)	-1.72%
Average Daily Handle	\$57,934.03	\$62,934.98	\$67,693.83	(\$5,000.95)	-7.95%	(\$4,758.85)	-7.03%
<b>LIVE RACES</b>							
Average Wagered Per Race:							
Thoroughbred	\$59,261.89	\$63,364.95	\$68,086.38	(\$4,103.06)	-6.48%	(\$4,721.43)	-6.93%
Quarter Horse	\$8,882.54	\$8,509.19	\$8,627.91	\$373.35	4.39%	(\$118.72)	-1.38%
Paint/Appaloosa	\$7,472.52	\$6,351.66	\$6,500.14	\$1,120.86	17.65%	(\$148.48)	-2.28%
Mixed	\$0.00	\$0.00	\$0.00	\$0.00	0.00%	\$0.00	0.00%
OTW	\$0.00	\$0.00	\$0.00	\$0.00	0.00%	\$0.00	0.00%
Average Races Per Day:							
Thoroughbred	8.87	9.52	9.37	(0.65)	-6.86%	0.15	1.60%
Quarter Horse	9.68	9.57	9.71	0.11	1.13%	(0.14)	-1.44%
Paint/Appaloosa	1.83	2.03	2.11	(0.20)	-9.69%	(0.08)	-3.79%
Mixed	0.00	0.00	0.00	0.00	0.00%	0.00	0.00%
OTW	0.00	0.00	0.00	0.00	0.00%	0.00	0.00%

# ENDNOTES

---

**NOTE 1**

Handle for guest facilities are not considered a part of the total net wagered. Intrastate guest commissions are also reported as a Host payment from another in-state racing facility.

**NOTE 2**

Wagers and number of races placed at OTW sites are not available by breed at this time.

**NOTE 3**

Unclaimed tickets are reported in this report, as of 12/31/2018, for all tracks.

**NOTE 4**

City and County tax amounts represent both live and simulcast races.

**NOTE 5**

Race day number, net wagered and attendance is totals of on-track and OTW amounts. Therefore, care must be taken when interpreting and analyzing averages.

# APPENDIX

## (TERMS, HEADINGS, AND TITLES)

---

**APPALOOSA HORSE RACING** The form of horse racing in which each participating horse is an Appaloosa registered with the Appaloosa Horse Club or any successor organization and mounted by a Jockey.

**ARABIAN HORSE RACING** The form of horse racing in which each participating horse is an Arabian registered with the Arabian Horse Club Registry of America and approved by the Arabian Horse Racing Association of America or any successor organization, mounted by a Jockey, and engaged in races on the flat over a distance of not less than one-quarter (1/4) mile or more than four (4) miles.

**ATTENDANCE** Number of people at licensed Oklahoma wagering sites as reported by individual associations or fairs.

**BREEDING DEVELOPMENT FUND SPECIAL ACCOUNT (B.D.F.S.A.)** All monies received by the Commission for deposit in the fund as revenue received from commissions on exotic wagering as determined by Oklahoma Statutes.

**BREAKAGE** The odd cents by which the amount payable on each dollar wagered exceeds a multiple of ten cents.

**COMMISSIONS** Takeout or monies withheld from pari-mutuel wagering as prescribed by Oklahoma Statutes.

**EXOTIC POOLS** Means the total wagers under the pari-mutuel system on the finishing position of two or more horses on one race or on the finishing position on one or more horses for two or more races.

**GUEST FACILITY** An association authorized by the Commission to offer, sell, cash, redeem, or exchange pari-mutuel tickets on races being run at a host association.

**HOST TRACK** An association conducting a licensed pari-mutuel meeting from which authorized contests or entire performances are simulcast.

**INTERSTATE** Refers to between states, i.e. Wagering conducted by a betting system outside the State of Oklahoma on the results of one or more races running at an Oklahoma host association.

# APPENDIX

## (TERMS, HEADINGS, AND TITLES)

---

**INTRASTATE** Refers to within the State, i.e. the exchange of live racing programs between any Oklahoma racing associations for the purpose of wagering.

**LICENSEE** A pari-mutuel organization granted a license by the Oklahoma Horse Racing Commission to conduct pari-mutuel racing.

**LOCAL TAX (CITY/COUNTY)** Additional takeout designated for distribution to local municipalities. Local municipalities receive a distribution of total monies wagered at an off-track wagering facility as designated by law.

**NET PAID TO PUBLIC** Winnings from pari-mutuel wagers returned to the public.

**NET WAGERED** The Net Wagered column includes all common pool wagering accepted by Oklahoma organizational licenses on live and simulcast races.

**OFF-TRACK WAGERING (OTW)** Any organization licensee shall file with the Oklahoma Horse Racing Commission its plan to conduct pari-mutuel wagering at a facility or facilities located outside the organization licensee's racing enclosure.

**OKLAHOMA BRED PROGRAM** An accredited Oklahoma-Bred horse shall mean an Arabian, Appaloosa, Quarter, Paint, Pinto, Thoroughbred, and any other breed not otherwise specified in the Act, and which meets certain requirements.

**ON-TRACK** Refers to activity at the host track facility.

**PAINT HORSE RACING** The form of horse racing in which each participating horse is a Paint horse registered with the American Paint Horse Association or any successor organization and mounted by a Jockey.

**PARI-MUTUEL** A form of wagering on the outcome of horse races whereby wagers are placed into wagering pools; win, place, show, or other pools designating the finishing position of two or more horses in a race or races. When the outcome of the race or races has been declared official, wagers comprising each pool are distributed as winnings less the amounts retained as takeout: licensee, purses, host, etc.

# APPENDIX

## (TERMS, HEADINGS, AND TITLES)

---

**PARI-MUTUEL SYSTEM OF WAGERING** A system of wagering on the outcome of horse races in which those who wager purchase tickets of various denominations on a horse or horses.

**PARI-MUTUEL TAX** Portion of the monies wagered retained by the State of Oklahoma from pari-mutuel wagering.

**PER CAPITA** Total wagers divided by total attendance.

**PINTO HORSE RACING** The form of horse racing in which each participating horse is a Pinto horse registered with the Pinto Horse Association of America, Inc., or any successor organization and mounted by a Jockey.

**PURSES** A portion of the takeout retained by horsemen from pari-mutuel wagering as determined by Oklahoma Statutes.

**QUARTER HORSE RACING** The form of horse racing in which each participating horse is a Quarter Horse registered with the American Quarter Horse Association or any successor organization, mounted by a Jockey, and engaged in a race on the flat.

**RACE DAY** Days during which horse races are conducted.

**RACE MEETING** The entire period of time not to exceed twenty (20) calendar days separating any race days for which an organization license has been granted to a group or person by the Commission to hold horse racing where a pari-mutuel system of wagering is conducted.

# APPENDIX

## (TERMS, HEADINGS, AND TITLES)

---

***SIMULCAST*** Means audio-visual transmission of a race meeting to off-track betting systems for the purpose of accepting wagers on the results of horse racing events. It may include the transmission of pari-mutuel wagering odds, amounts wagered and the payoffs of such events and other horse racing programming relating to the racehorses or participants.

***SIMULCAST DAYS*** Day when the organization licensee is not conducting live racing, the licensee may accept wagers on the results of not more than six out-of-state full racing programs.

***STATE AUDITOR FEE*** The State Auditor and Inspector receives one-tenth of one percent (1/10th of 1%) of total monies wagered at the racing enclosure on out-of-state simulcast races as well as OTW facilities on all races.

***THOROUGHBRED HORSE RACING*** The form of horse racing in which each participating horse is a Thoroughbred horse registered with The Jockey Club or any successor organization, mounted by a Jockey, and engaged in races on the flat.

***UNCLAIMED TICKETS*** Ticket must be cashed within sixty (60) days after their purchase. Any unclaimed proceeds will be deposited into the Oklahoma Breeding Development Fund Special Account on a calendar quarterly basis.

***WIN, PLACE, SHOW (WPS)*** The total wagers under the pari-mutuel system on any horse in a particular race to finish first, second, or third.





Cindy Byrd, CPA | State Auditor & Inspector

2300 N. Lincoln Blvd., Room 123, Oklahoma City, OK 73105 | 405.521.3495 | [www.sai.ok.gov](http://www.sai.ok.gov)